



Two Bearing Housings series PDNI and BL

These bearing units are mainly used in fan assemblies. They can however, be used without hesitation in other applications. e.g. in

- Circular saws
- Milling machine shafts
- Belt drives
- Or similar bearing applications

The bearing units PDNI and BL offer the following advantages

- Simple assembly
- Low maintenance costs
- Efficient sealing against dust and dirt
- Single piece housing (torsionally rigid)
- 6 possible bearing combinations allow it to be used for various requirements.

The housing body, cover and grease control disc are manufactured from grey cast iron GG20.

The two bearing housings are designed for grease lubrication and both bearing positions are equipped with grease nipples. The two bearing housings are supplied complete with seals and grease control disc.

The two bearing housings series PDNI and BL can also be supplied as a complete assembled bearing unit with shaft, bearing and grease filling (Shell Alvania R3). The incorporated shafts are made from Material St 52.3.

On request, other shaft materials are available.

Two Bearing Housings ZLGO

Two bearing housings ZLGO are fitted with a floating and a locating bearing. A cylindrical roller bearing type NU is used for the floating bearing whilst a ball bearing is used for the locating bearing.

A sliding disc provides sufficient oil to each bearing position.

Various holes are incorporated in the housing through which it is possible, for instance, to fill oil or when required, for example at inspection or oil change, to drain off oil. The prescribed oil level can be controlled by means of an oil level gauge fitted for this purpose.

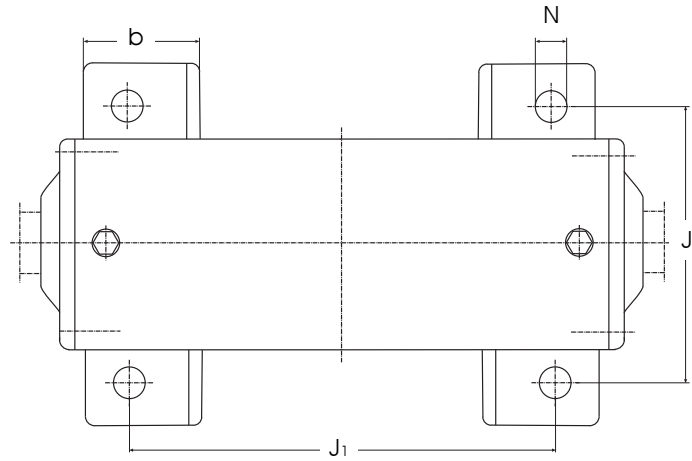
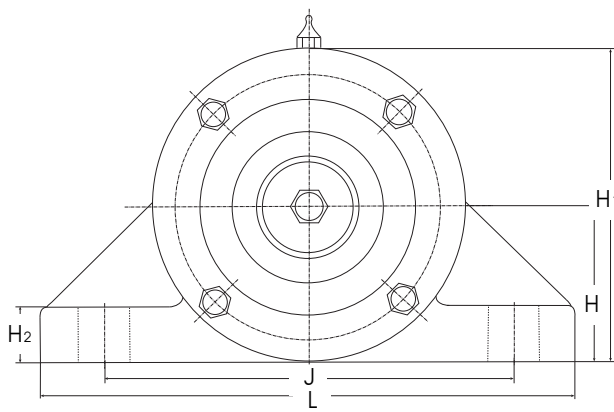
The incorporated splash rings and side covers are so arranged that under normal operating conditions it is not possible for oil to leak out.

Regreasing chambers in the housing covers prevent the ingress of dirt.

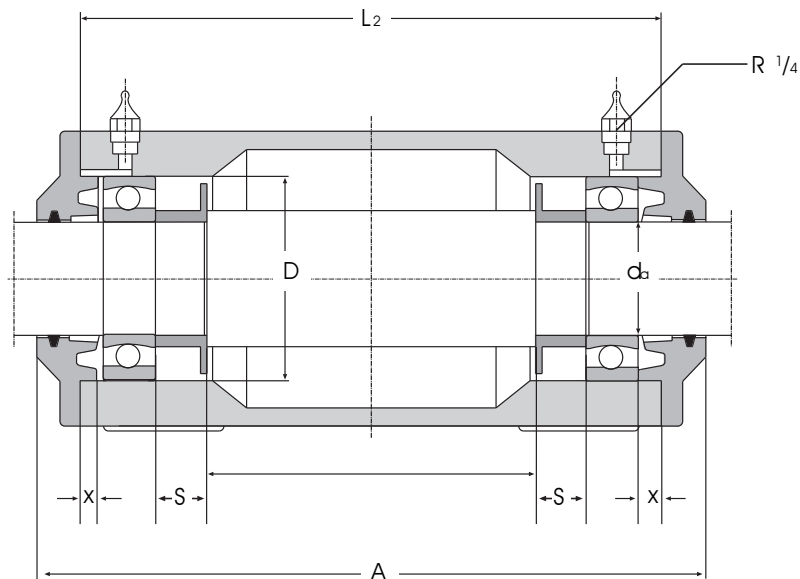
Fan Bearing Housings

Series BL

With grease control discs
for ball bearings (without shaft)



Housing Ref No	d_a	D	H	H_1	H_2	L mm	J	N	A	L_2	J_1	b
BL 25	25	62	50	95	16	155	120	11,5	218	184	135	41
BL 30	30	72	50	100	18	170	130	15	300	266	210	50
BL 35	35	80	60	120	20	190	150	15	330	296	240	50
BL 40	40	90	60	120	20	190	150	15	330	296	240	50
BL 40 S	40	90	60	120	20	190	150	15	450	416	360	50
BL 45	45	100	70	140	23	190	150	15	365	331	263	60
BL 45/K	45	100	70	140	28	200	160	16	260	226	165	64
BL 45/H	45	85	60	118	20	190	150	15	305	282	200	42
BL 50	50	110	70	140	23	190	150	15	365	331	263	60
BL 50 S	50	110	70	140	23	190	150	15	550	516	448	60
BL 55	55	120	80	160	25	210	170	20	405	371	295	70
BL 60	60	130	80	160	25	210	170	20	405	371	295	70
BLK 60	60	130	80	160	22	224	190	15	365	349	263	62
BL 60 SS	60	130	80	160	25	210	170	20	740	706	595	65
BL 70	70	150	95	190	28	270	210	24	450	416	330	80
BL 75	75	160	95	190	28	270	210	24	450	416	330	80
BL 80	80	170	112	217	30	290	230	24	490	450	350	75
BLK 80	80	170	105	210	30	300	250	20	395	375	295	70
BLL 80	80	170	120	240	35	335	280	24	590	566	450	88
BLK 90	90	190	120	240	35	355	280	24	440	416	330	78
BLL 90	90	190	120	240	35	335	280	24	590	566	450	88
BL 95	95	200	125	245	35	340	280	24	540	500	400	80
BL 100	100	215	145	290	40	400	335	24	590	562	450	104



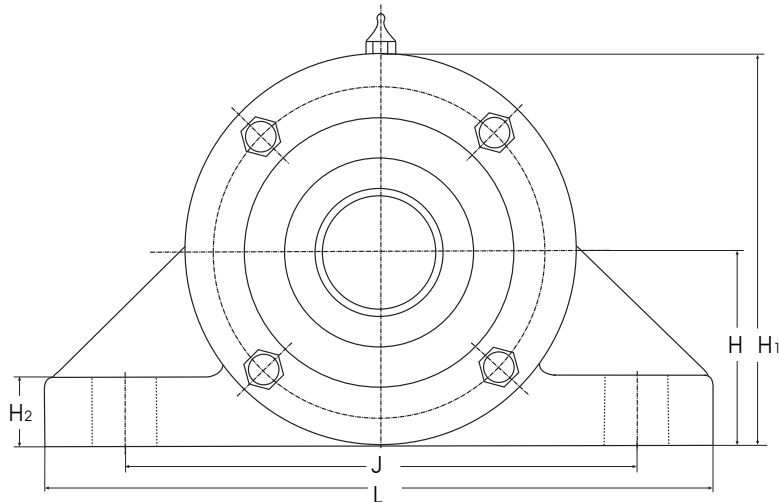
Shafts with adjusting springs according to DIN 6885, page 1

Shaft ends with thread shape D according to DIN 332, page 2

Housing Ref No	Matching bearing	Weight kg	Compensating spring washer	Permissible speed rpm	Grease quantity (g)		s	x
					First fill	Regreasing		
BL 25	6305	6,5	AS 62	11000	50	-	14	7
BL 30	6306	8	AS 72	9000	60	5	14	7
BL 35	6307	9	AS 80	8500	80	5	16	7
BL 40	6308	10	AS 90	7500	110	10	16	7
BL 40 S	6308	16	AS 90	7500	110	10	16	7
BL 45	6309	14	AS 100	6700	140	10	16	7
BL 45/K	6309	-	AS 100	6700	140	10	16	7
BL 45/H	6209	-	AS 85	7500	-	-	8	15
BL 50	6310	13	AS 110	6300	190	10	16	7
BL 50 S	6310	21	AS 110	6300	190	10	16	7
BL 55	6311	22	AS 120	5600	240	15	16	6
BL 60	6312	21	AS 130	5000	300	15	16	6
BLK 60	6312	21	AS 130	5000	300	15	16	12
BL 60 SS	6312	35	AS 130	5000	300	15	16	6
BL 70	6314	31	AS 150	4500	480	20	20	6
BL 75	6315	32	AS 160	4300	590	20	20	6
BL 80	6316	50	AS 170	3800	700	20	20	6
BLK 80	6316	44	AS 170	3800	700	20	20	15
BLL 80	6316	75	AS 170	3800	700	20	20	16
BLK 90	6318	64	AS 190	3400	1000	25	20	16
BLL 90	6318	85	AS 190	3400	1000	25	20	16
BL 95	6319	60	AS 200	3200	1150	-	20	6
BL 100	6320	95	AS 215	3000	1450	35	25	16

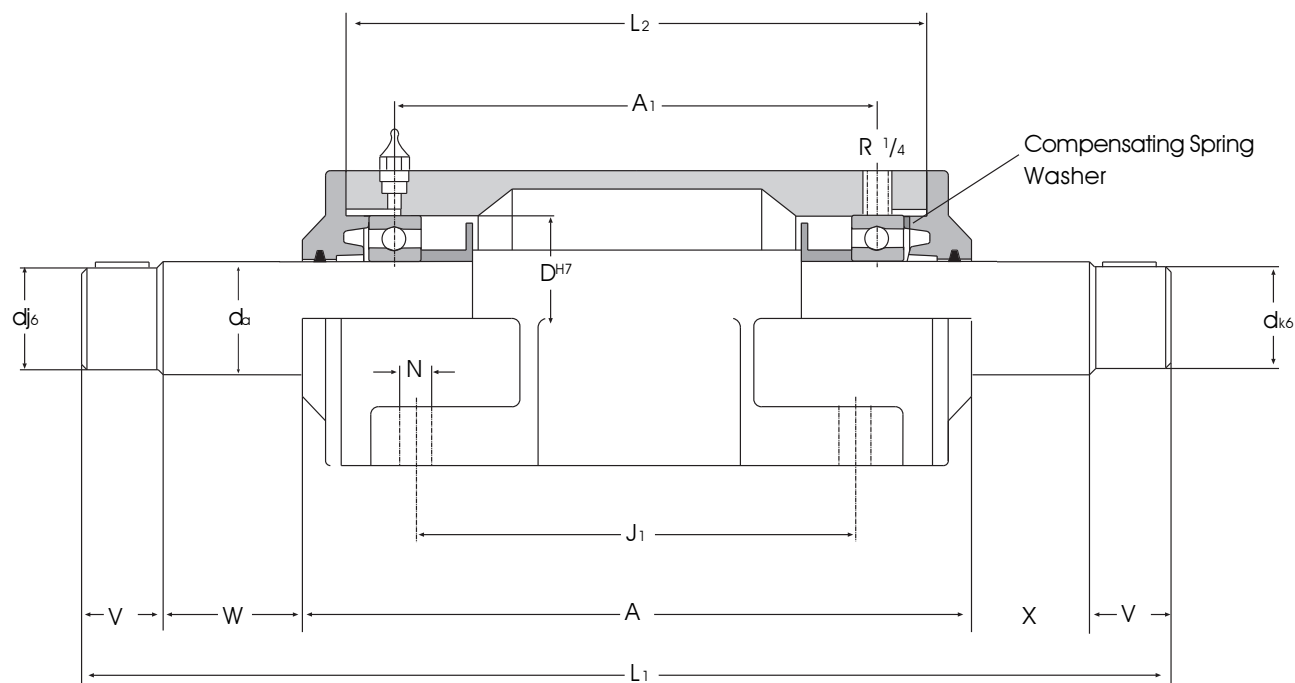
Fan Bearing Housings

Series BL ...
Completely assembled
with bearing and shaft



Housing Ref No	d _a	d	L ₁	V	W	X	A	A ₁	L ₂	J ₁	J	L	H	H ₁	H ₂	N
BL 30	30	28	470	50	50	20	300	231	266	210	130	170	50	100	18	15
BL 35	35	32	530	60	55	25	330	259	296	240	150	190	60	120	20	15
BL 40	40	38	530	60	55	25	330	257	296	240	150	190	60	120	20	15
BL 45	45	42	575	65	55	25	365	290	331	263	150	190	70	140	23	15
BL 50	50	48	585	70	55	25	365	288	331	263	150	190	70	140	23	15
BL 55	55	50	645	80	55	25	405	328	371	295	170	210	80	160	25	20
BL 60	60	55	645	80	55	25	405	326	371	295	170	210	80	160	25	20
BL 70	70	65	755	110	60	25	450	367	416	330	210	270	95	190	28	24
BL 75	75	70	755	110	60	25	450	365	416	330	210	270	95	190	28	24
BL 80	80	75	805	110	70	25	490	396	450	350	230	290	112	217	30	24
BLL 80	80	75	935	120	80	25	590	492	566	450	280	335	120	240	35	24
BLL 90	90	85	935	120	80	25	590	488	566	450	280	335	120	240	35	24
BL 100	100	90	985	120/170	80	25	590	483	562	450	335	400	145	290	40	24
BL 110	110	100	985	120/170	80	25	590	480	562	450	335	400	145	290	40	24

Series BL ...
 Completely assembled
 with bearing and shaft



Shafts with adjusting springs according to DIN 6885, page 1

Shaft ends with thread shape D according to DIN 332, page 2

Fitted Bearing	D	Compensating Spring washer	Grease quantity (g) per bearing for regreasing	Speed rpm	Weight kg
6306 C3	72	AS 72	5	9500	12
6307 C3	80	AS 80	5	8500	17
6308 C3	90	AS 90	10	7500	18
6309 C3	100	AS 100	10	6700	28
6310 C3	110	AS 110	15	5300	37
6311 C3	120	AS 120	15	5300	37
6312 C3	130	AS 130	15	5000	39
6314 C3	150	AS 150	20	4300	63
6315 C3	160	AS 160	20	4000	64
6316 C3	170	AS 170	20	3800	84
6316 C3	170	AS 170	20	3400	132
6318 C3	190	-	25	3400	134
6320 C3	215	-	35	3000	198
6322 C3	240	-	40	2600	196