



Grease Lubrication Bushed Bearings

Bushed bearings to DIN 502 to 506 are suitable for many areas of application, such as for example in wood or steel industries, in chemical installations and in the food industry.

Depending on the operating conditions they can be used for running speeds of up to approximately 1.5m/s.

The housings are manufactured from grey cast iron GG. The design arrangement guarantees high loading. The bearing DIN 502 to 504 can be used either with or without a bush.

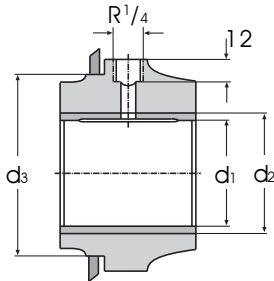
The bushes are made from red cast RG 7. The bearing bore has a tolerance of D7 if flanged bearings or eye bearings are used without bushes.

Flanged Bearing

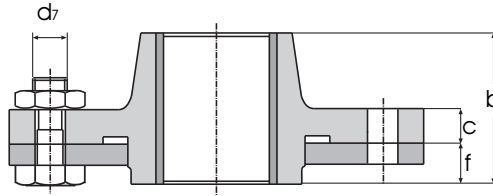
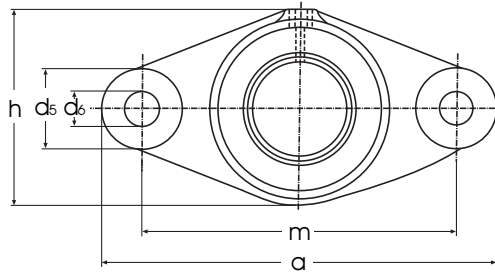
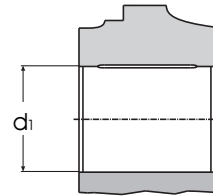
to DIN 502



Style A with Bush



Style B without Bush



d ₁ / D10 A	d ₁ B	a	b	c	d ₂	d ₃ mm	d ₅	d ₆	d ₇	f	h	m +/-1
-	25	135	60	20	-	50	35	14	M12	20	60	100
-	30	135	60	20	-	50	35	14	M12	20	60	100
25	35	155	60	20	35	65	35	14	M12	20	75	120
30	40	155	60	20	40	65	35	14	M12	20	75	120
35	45	180	70	25	45	80	40	18	M16	20	90	140
40	50	180	70	25	50	80	40	18	M16	20	90	140
45	55	210	80	30	55	90	50	22	M20	20	100	160
50	60	210	80	30	60	90	50	22	M20	20	100	160
55	55	240	90	30	65	110	50	22	M20	25	120	190
60	70	240	90	30	70	110	50	22	M20	25	120	190
70	80	275	100	35	80	130	55	26	M24	25	140	220