



Two Bearing Housings series PDNI and BL

These bearing units are mainly used in fan assemblies. They can however, be used without hesitation in other applications. e.g. in

- Circular saws
- Milling machine shafts
- Belt drives
- Or similar bearing applications

The bearing units PDNI and BL offer the following advantages

- Simple assembly
- Low maintenance costs
- Efficient sealing against dust and dirt
- Single piece housing (torsionally rigid)
- 6 possible bearing combinations allow it to be used for various requirements.

The housing body, cover and grease control disc are manufactured from grey cast iron GG20.

The two bearing housings are designed for grease lubrication and both bearing positions are equipped with grease nipples. The two bearing housings are supplied complete with seals and grease control disc.

The two bearing housings series PDNI and BL can also be supplied as a complete assembled bearing unit with shaft, bearing and grease filling (Shell Alvania R3). The incorporated shafts are made from Material St 52.3.

On request, other shaft materials are available.

Two Bearing Housings ZLGO

Two bearing housings ZLGO are fitted with a floating and a locating bearing. A cylindrical roller bearing type NU is used for the floating bearing whilst a ball bearing is used for the locating bearing.

A sliding disc provides sufficient oil to each bearing position.

Various holes are incorporated in the housing through which it is possible, for instance, to fill oil or when required, for example at inspection or oil change, to drain off oil. The prescribed oil level can be controlled by means of an oil level gauge fitted for this purpose.

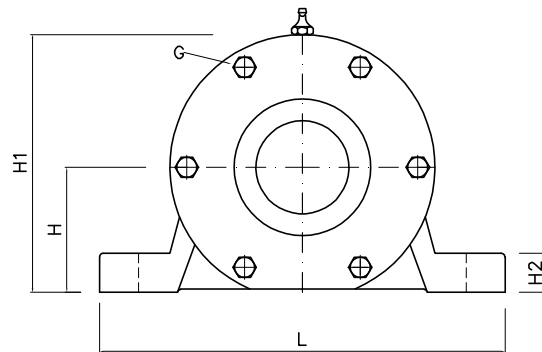
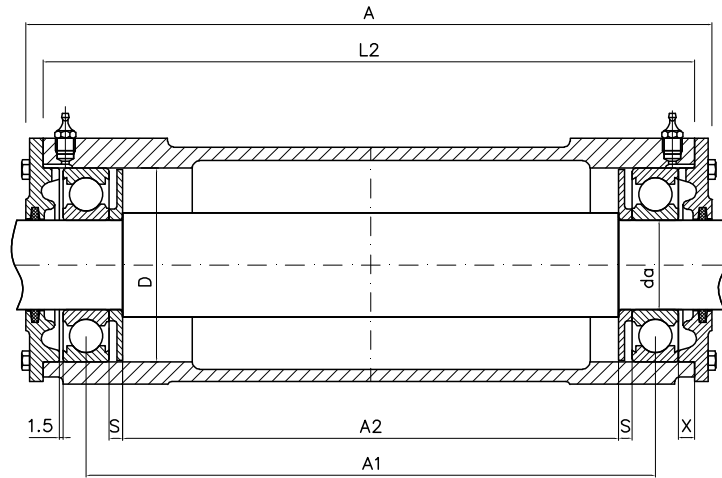
The incorporated splash rings and side covers are so arranged that under normal operating conditions it is not possible for oil to leak out.

Regreasing chambers in the housing covers prevent the ingress of dirt.

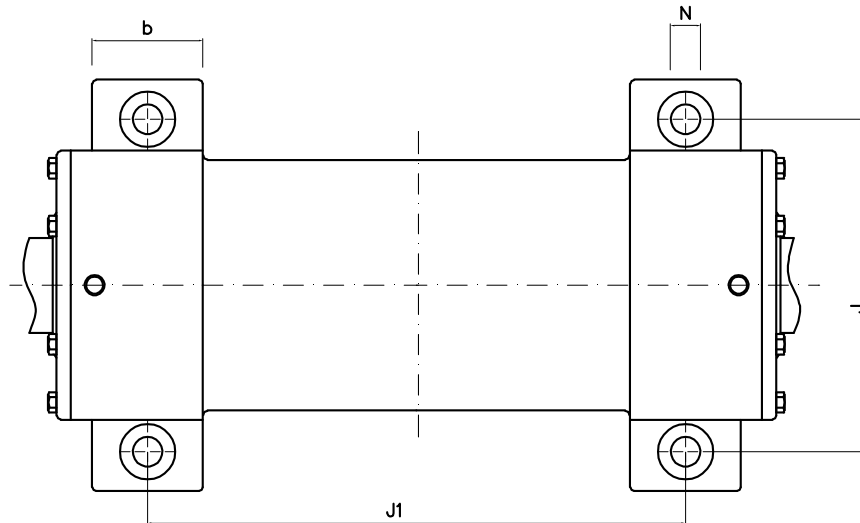
Fan Bearing Housings

Series PDNI

With grease control discs
for ball bearings (without shaft)



Housing Ref No	d_a	H	H_1	L_2	A	A_1	A_2	L	b	H_2	J_1	J	S	X	N	D
mm																
PDNI 306	30	50	100	210	226	171,5	140,0	160	40	18	150	130	6,1	9,5	15	72
PDNI 307	35	60	116	239	260	195,5	160,0	190	45	18	175	150	7,1	11	15	80
PDNI 308	40	60	121	298	315	255,5	214,0	190	52	20	225	150	9,1	9,4	15	90
PDNI 309	45	70	137	340	360	279,5	236,0	210	52	22	250	170	9,1	17,4	15	100
PDNI 310	50	70	142	360	377	311,5	266,0	210	60	25	275	170	9,1	10,4	15	110
PDNI 311	55	80	158	400	422	335,5	288,0	260	60	25	300	210	9,1	17,4	19	120
PDNI 312	60	80	165	437	460	383,5	334,0	260	70	25	340	210	9,1	10,9	19	130
PDNI 313	65	95	185	470	492	402,5	349,0	280	70	25	360	230	10,1	16,9	19	140
PDNI 314	70	95	190	490	512	420,5	365,0	290	70	25	380	230	10,1	16,9	19	150
PDNI 315	75	100	200	508	547	448,5	389,0	320	80	30	400	260	11,1	10,9	19	160
PDNI 316	80	112	220	525	556	466,0	405,0	320	80	30	420	260	11,1	9,4	19	170
PDNI 317	85	112	225	559	590	486,0	422,5	350	80	30	440	290	11,1	15,5	19	180
PDNI 318	90	112	230	575	605	510,0	446,5	350	85	30	460	290	10	10,5	19	190
PDNI 319	95	125	253	605	648	540,0	470,5	400	90	36	480	320	12	9,5	24	200
PDNI 320	100	130	264	635	673	570	500	400	95	40	500	320	8,5	11,5	24	215

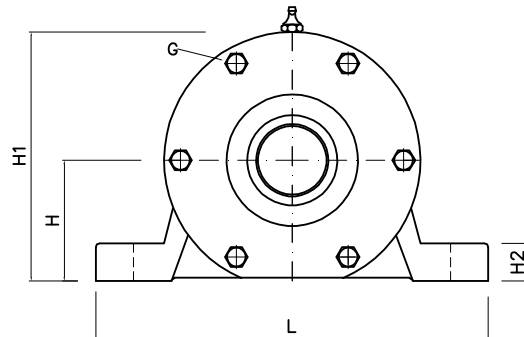
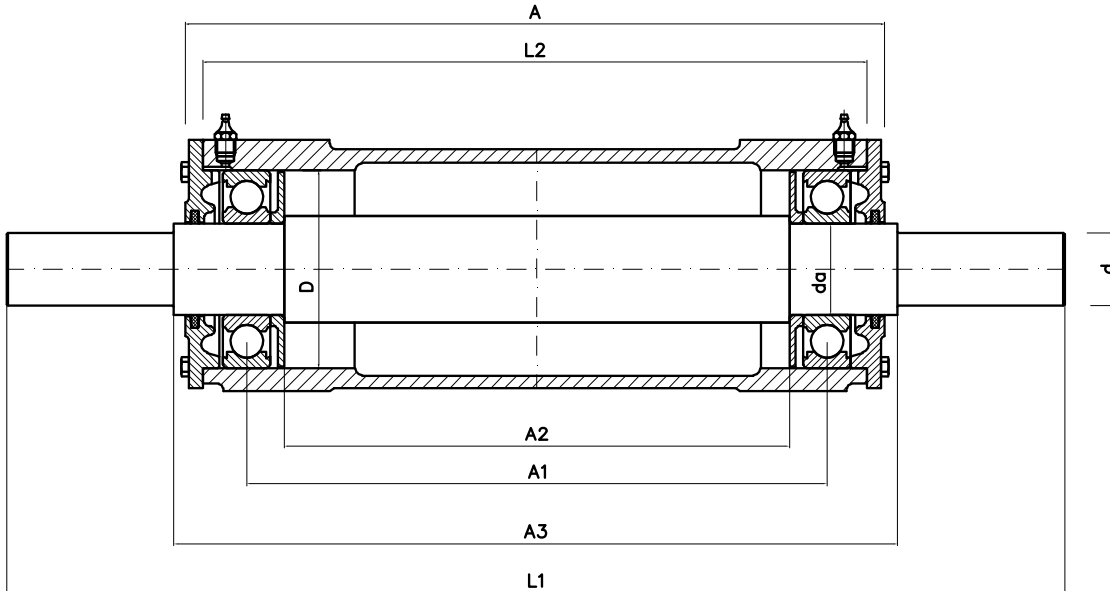


Housing Ref No	Matching bearing	Weight kg	Cover screws G	Permissible Speed with grease lubrication	Compensating spring washer
PDNI 306	6306 C3	6,6	4 x M 6	9000	AS 72
PDNI 307	6307 C3	9,2	4 x M 6	8500	AS 80
PDNI 308	6308 C3	11,8	4 x M 6	7500	AS 90
PDNI 309	6309 C3	15	4 x M 6	6700	AS 100
PDNI 310	6310 C3	17,8	6 x M 6	6300	AS 110
PDNI 311	6311 C3	27,5	4 x M 8	5600	AS 120
PDNI 312	6312 C3	32	6 x M 8	5000	AS 130
PDNI 313	6313 C3	34	6 x M 8	4800	AS 140
PDNI 314	6314 C3	37	6 x M 8	4500	AS 150
PDNI 315	6315 C3	48	6 x M 8	4300	AS 160
PDNI 316	6316 C3	51	6 x M 10	3800	AS 170
PDNI 317	6317 C3	65	6 x M 10	3600	-
PDNI 318	6318 C3	69	6 x M 10	3400	-
PDNI 319	6319 C3	83	6 x M 10	3200	-
PDNI 320	6320 C3	93	6 x M 10	3000	-

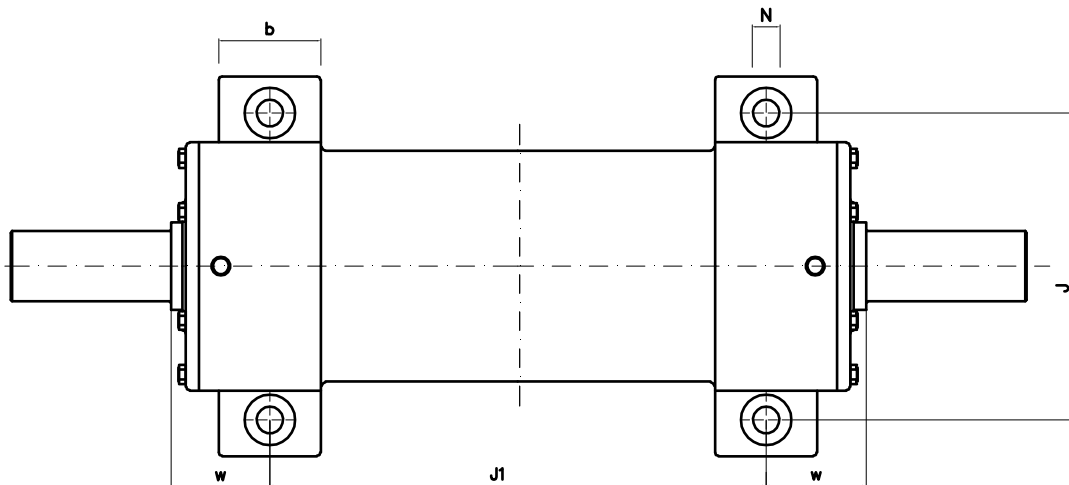
Fan Bearing Housings

Series PDNI

Complete with bearing and shaft



Housing Ref No	d	da	H	H ₁	L ₂	L ₁	A	A ₁	A ₂	A ₃	L	b	H ₂	J ₁	J	w	N	D
PDNI 306	24	30	50	100	210	340	226	171,5	140,0	240	160	40	18	150	130	45,0	15	72
PDNI 307	28	35	60	116	239	394	260	195,5	160,0	274	190	45	18	175	150	49,5	15	80
PDNI 308	32	40	60	121	298	491	315	255,5	214,0	331	190	52	20	225	150	53,0	15	90
PDNI 309	38	45	70	137	340	536	360	279,5	236,0	376	210	52	22	250	170	63,0	15	100
PDNI 310	42	50	70	142	360	613	377	311,5	266,0	393	210	60	25	275	170	59,0	15	110
PDNI 311	48	55	80	158	400	658	422	335,5	288,0	438	260	60	25	300	210	69,0	19	120
PDNI 312	48	60	80	165	437	696	460	383,5	334,0	476	260	70	25	340	210	68,0	19	130
PDNI 313	55	65	95	185	470	728	492	402,5	349,0	508	280	70	25	360	230	74,0	19	140
PDNI 314	60	70	95	190	490	812	512	420,5	365,0	532	290	70	25	380	230	76,0	19	150
PDNI 315	65	75	100	200	508	847	547	448,5	389,0	567	320	80	30	400	260	83,5	19	160
PDNI 316	70	80	112	220	525	856	556	466,5	405,0	576	320	80	30	420	260	78,0	19	170
PDNI 317	75	85	112	225	559	890	590	486,0	422,5	610	350	80	30	440	290	85,0	19	180
PDNI 318	80	90	112	230	575	965	605	510,0	446,5	625	350	85	30	460	290	82,5	19	190
PDNI 319	85	95	125	253	605	1008	648	540,0	470,5	668	400	90	36	480	320	94,0	24	200



Shafts with adjusting springs according to DIN 6885, page 1

Shaft ends with thread shape D according to DIN 332, page 2

Housing Ref No	Fitted bearing	Weight kg	Grease quantity (g) regreasing			Cover screws G	Permissible speed with grease lubrication	Compensating Spring washer
			First fill	Floating b.	Locatingb.			
PDNI 306	6306 C3	9,5	60	5	5	4 x M 6	9000	AS 72
PDNI 307	6307 C3	13,7	80	5	5	4 x M 6	8500	AS 80
PDNI 308	6308 C3	19	110	10	10	4 x M 6	7500	AS 90
PDNI 309	6309 C3	23,5	140	10	10	4 x M 6	6700	AS 100
PDNI 310	6310 C3	30	190	10	10	6 x M 6	6300	AS 110
PDNI 311	6311 C3	39	240	15	15	4 x M 8	5600	AS 120
PDNI 312	6312 C3	52	300	15	15	6 x M 8	5000	AS 130
PDNI 313	6313 C3	56,5	390	15	15	6 x M 8	4800	AS 140
PDNI 314	6314 C3	67	480	20	20	6 x M 8	4500	AS 150
PDNI 315	6315 C3	80	590	20	20	6 x M 8	4300	AS 160
PDNI 316	6316 C3	90	700	20	20	6 x M 10	3800	AS 170
PDNI 317	6317 C3	112	830	25	25	6 x M 10	3600	-
PDNI 318	6318 C3	130	1000	25	25	6 x M 10	3400	-
PDNI 319	6319 C3	150	1150	30	30	6 x M 10	3200	-