

SNI- and SN - Plummer Block Housings are split bearing housings for the fitting of self aligning ball or spherical roller bearings which are fixed to the shaft either by shrink fitting or with an adapter sleeve. They are designed for grease lubrication only and can be supplied with lubrication holes if required.. The dimensions of SNI- Housings comply with specifications laid down in DIN 736 & 737, whereas those of the SN- Housings correspond to DIN 736 till 739.

The bearing seat of SNI-Housings is manufactured in tolerance H8, that of SN-Housings in tolerance H7. A locating bearing is obtained by fitting one or two fixing rings between housing shoulder and bearing outer ring.

These Plummer Block Housings are supplied as standard with felt seals. For special applications such as high temperatures, heavy dirt loads etc, it is possible to fit these housings with a variety of seal arrangements.

When used as an end bearing (Arrangement A) a cover plate is supplied for one side instead of the normal seal.

Under the reference SSNI these housings can be supplied with reinforced base. Normally the housings do not have holes in the base. On request however, they can be supplied with either 2 or 4 mounting holes.

Materials

SNI- and SN- Plummer Block Housings are manufactured from Grey Cast Iron GG20. Housings from Spheroidal Cast Iron GGG 40 or Cast Steel GS 45 are also available for applications where housings with greater strength are required.

Loadability of the Housings

SNI- and SN- Plummer Block Housings are designed for loads applied vertically to the bridging surface. In these instances the permissible load is determined by the load rating of fitted bearing. Should loads be applied at other angles, checks should be carried out to determine whether they are still valid for the housing, the housing connecting bolts and the mounting bolts.

Values of the housing breaking load Q , for various load directions are listed in the table on page 26. A factor of 1.8 x applies to housings from material GGG 40 & GS 45.

Bolts to strength class 8.8 are supplied as standard for joining the housing upper and lower parts.

Maximum values for the connecting bolts for various load directions are listed in the table on page 27.

It is to be ensured that, when loading the housings, the connecting bolts and holding down bolts are tightened correctly.

Lubrication

SNI- and SN- Plummer Block Housings are designed solely for grease lubrication. In the majority of cases the grease filling applied during initial assembly will be sufficient to last until the general inspection. Under certain conditions however, regreasing may be necessary. We can affix the adequate lubrication hole to the housing, if required. For bearing applications in the ventilation or fan assembly where due to high speeds, a continuous lubrication is necessary, we supply SN housing variations SN..VS, SN..R with grease regulators, (see page 29)

Seals for Plummer Block Housings

Depending on the application, the plummer block can be fitted with various seals. Felt seals are simple seals which allow a circumferential speed of 4m/s. Before fitting felt seals they should be soaked in warm oil for several minutes. Should temperatures be in excess of 100 °C the felt seal should be replaced with a temperature resistant seal.

The double lip seal is split and allows a circumferential speed of 8m/s. Attention should be paid to ensure that the gap between the two sealing lips is filled with grease during assembly and that the sliding surface on the shaft is polished.

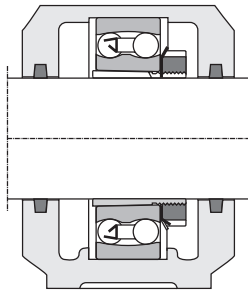
With high speeds and difficult operating conditions we recommend fitting either single or double labyrinth seals. Perbunan cord supplied with the seals is inserted between the labyrinth seal and shaft and ensures that the seals rotate with the shaft. An out of alignment of upto 0.4° between shaft and housing is permissible.

With continuous temperatures above 100 °C, a cord of heat resistant material must be used. When regreasing the bearing centre should also be regreased where possible.

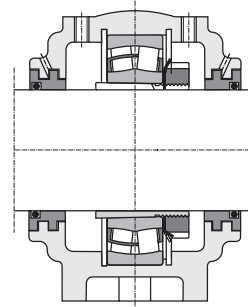
If the double labyrinth seal is used, it is possible to fill the labyrinth with grease by using a grease nipple, thus a additional sealing is achieved.

For extremely difficult and raw operating conditions we offer diverse special seals. Please contact our technical department in such cases.

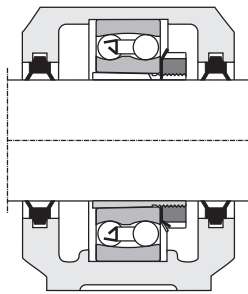
Types of Seal



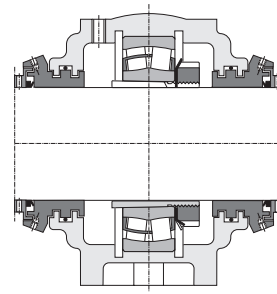
Felt strip or graphited cord seal



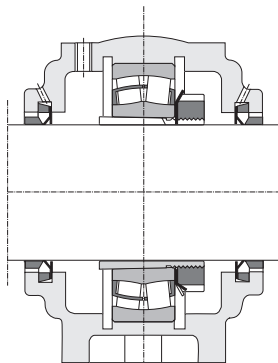
Double Labyrinth seal



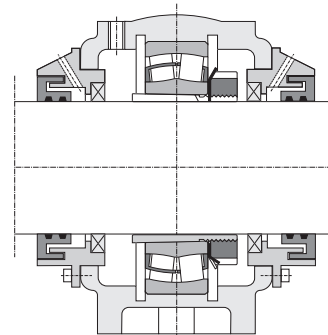
Double lip seal



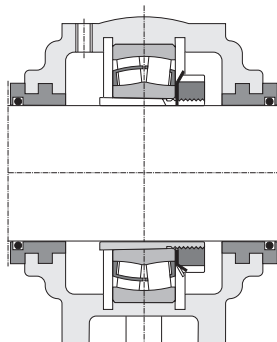
Taconite seal
(Standard execution)



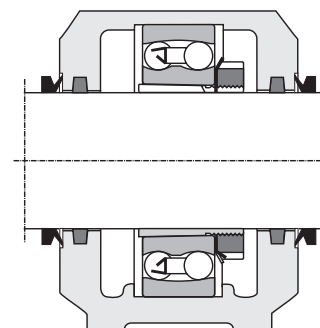
V- ring seal



Taconite seal
(Special execution)



Labyrinth seal

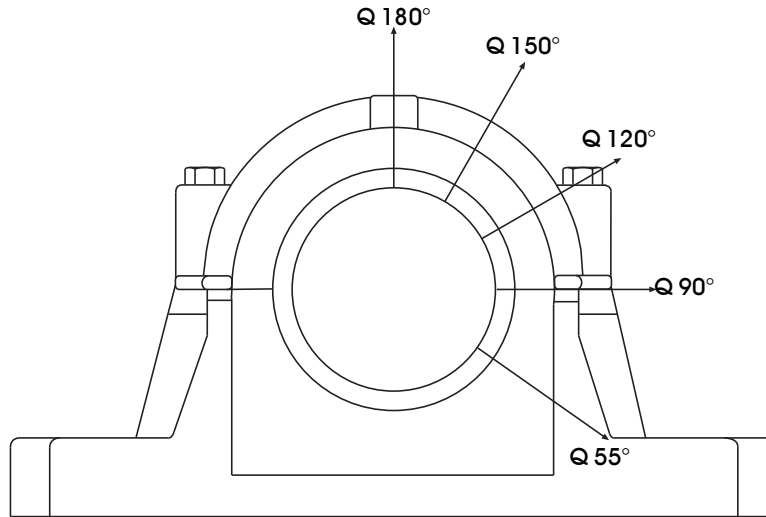


Felt strip with Labyrinth seal

SNI Plummer Block Housings



Breaking Loads for SNI Plummer Blocks



| Housing Ref No | Breaking Load kN | | | | |
|----------------|------------------|--------|--------|-------|-------|
| | Q 180° | Q 150° | Q 120° | Q 90° | Q 55° |
| SNI 208 - 307 | 110 | 85 | 95 | 130 | 215 |
| SNI 209 | 115 | 90 | 100 | 140 | 230 |
| SNI 210 | 130 | 110 | 120 | 155 | 265 |
| SNI 211 | 140 | 115 | 125 | 170 | 275 |
| SNI 212 | 150 | 120 | 130 | 180 | 300 |
| SNI 213 | 170 | 130 | 150 | 205 | 340 |
| SNI 215 | 205 | 160 | 185 | 250 | 410 |
| SNI 216 | 215 | 175 | 190 | 260 | 430 |
| SNI 217 | 240 | 190 | 205 | 290 | 480 |
| SNI 218 | 275 | 215 | 250 | 340 | 550 |
| SNI 506 | 85 | 65 | 80 | 100 | 170 |
| SNI 507 - 606 | 95 | 80 | 85 | 115 | 190 |
| SNI 508 - 607 | 110 | 85 | 95 | 130 | 215 |
| SNI 509 | 115 | 90 | 100 | 140 | 230 |
| SNI 510 - 608 | 130 | 110 | 120 | 155 | 265 |
| SNI 511 - 609 | 140 | 115 | 125 | 170 | 275 |
| SNI 512 - 610 | 150 | 120 | 130 | 180 | 300 |
| SNI 513 - 611 | 170 | 130 | 150 | 205 | 340 |
| SNI 515 - 612 | 205 | 160 | 185 | 250 | 410 |
| SNI 516 - 613 | 215 | 175 | 190 | 260 | 430 |
| SNI 517 | 240 | 190 | 205 | 290 | 480 |
| SNI 518 - 615 | 275 | 215 | 250 | 340 | 550 |
| SNI 519 - 616 | 290 | 230 | 260 | 350 | 580 |
| SNI 520 - 617 | 310 | 250 | 280 | 370 | 620 |
| SNI 522 - 619 | 340 | 275 | 310 | 410 | 680 |
| SNI 524 - 620 | 400 | 320 | 350 | 470 | 790 |
| SNI 526 | 450 | 360 | 410 | 540 | 900 |
| SNI 528 | 530 | 430 | 470 | 630 | 1050 |
| SNI 530 | 600 | 480 | 540 | 730 | 1200 |
| SNI 532 | 720 | 570 | 640 | 860 | 1450 |

Permissible loading for SNI Plummer Block clamping bolts

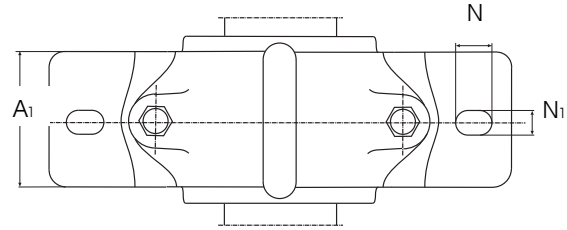
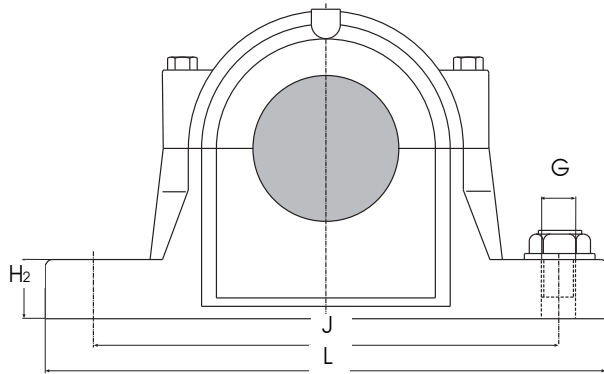
| Housing Ref No | Clamping Bolts | | max. Permissible Load kN for the two connecting bolts | | |
|-------------------|----------------|-----------|--|--------|--------|
| | DIN 931 8.8 | Torque Nm | Q 180° | Q 150° | Q 120° |
| SNI 208 | M10 x 55 | 50 | 25 | 30 | 50 |
| SNI 209 | M10 x 55 | 50 | 25 | 30 | 50 |
| SNI 210 | M10 x 55 | 50 | 25 | 30 | 50 |
| SNI 211 | M12 x 60 | 80 | 40 | 45 | 80 |
| SNI 212 | M12 x 60 | 80 | 40 | 45 | 80 |
| SNI 213 | M12 x 65 | 80 | 40 | 45 | 80 |
| SNI 215 | M12 x 65 | 80 | 40 | 45 | 80 |
| SNI 216 | M16 x 70 | 150 | 85 | 100 | 170 |
| SNI 217 | M16 x 80 | 150 | 85 | 100 | 170 |
| SNI 218 | M16 x 85 | 150 | 85 | 100 | 170 |
| SNI 506 | M10 x 45 | 50 | 25 | 30 | 50 |
| SNI 507 - 606 | M10 x 50 | 50 | 25 | 30 | 50 |
| SNI 508 - 607 | M10 x 55 | 50 | 25 | 30 | 50 |
| SNI 509 | M10 x 55 | 50 | 25 | 30 | 50 |
| SNI 510 - 608 | M10 x 55 | 50 | 25 | 30 | 50 |
| SNI 511 - 609 | M12 x 60 | 80 | 40 | 45 | 80 |
| SNI 512 - 610 | M12 x 60 | 80 | 40 | 45 | 80 |
| SNI 513 - 611 | M12 x 65 | 80 | 40 | 45 | 80 |
| SNI 515 - 612 | M12 x 65 | 80 | 40 | 45 | 80 |
| SNI 516 - 613 | M16 x 70 | 150 | 85 | 100 | 170 |
| SNI 517 | M16 x 80 | 150 | 85 | 100 | 170 |
| SNI 518 - 615 | M16 x 85 | 150 | 85 | 100 | 170 |
| SNI 519 - 616 | M16 x 90 | 150 | 85 | 100 | 170 |
| SNI 520 - 617 | M20 x 100 | 200 | 130 | 150 | 260 |
| SNI 522 - 619 | M20 x 100 | 200 | 130 | 150 | 260 |
| SNI 524 - 620 | M20 x 110 | 200 | 130 | 150 | 260 |
| SNI 526 | M20 x 120 | 200 | 130 | 150 | 260 |
| SNI 528 | M20 x 120 | 200 | 130 | 150 | 260 |
| SNI 530 | M20 x 130 | 200 | 130 | 150 | 260 |
| SNI 532 | M20 x 130 | 200 | 130 | 150 | 260 |

* for other seals see on page 7

Plummer Block (split)

Series SNI 5 and SNI 6

For self aligning ball bearings or spherical roller bearings with adapter sleeve

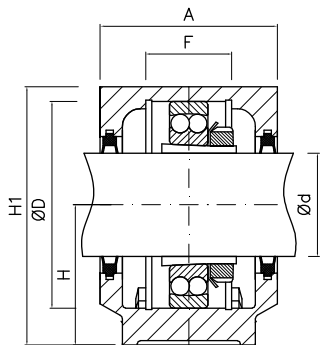


| Housing Ref No | Weight kg | d ₁ | D ^{H8} | H | H ₁ | A | L mm | A ₁ | A ₂ | H ₂ | F | J | N ₁ | N | G |
|----------------|-----------|----------------|-----------------|----|----------------|-----|------|----------------|----------------|----------------|----|-----|----------------|----|------|
| SNI 506 | 2,0 | 25 | 62 | 50 | 88 | 78 | 185 | 52 | 86 | 22 | 32 | 150 | 15 | 20 | M 12 |
| SNI 606 | 2,1 | 25 | 72 | 50 | 90 | 85 | 185 | 52 | 93 | 22 | 34 | 150 | 15 | 20 | M 12 |
| SNI 507 | 2,1 | 30 | 72 | 50 | 93 | 83 | 185 | 52 | 91 | 22 | 34 | 150 | 15 | 20 | M 12 |
| SNI 607 | 2,8 | 30 | 80 | 60 | 105 | 93 | 205 | 60 | 101 | 25 | 39 | 170 | 15 | 20 | M 12 |
| SNI 508 | 2,8 | 35 | 80 | 60 | 105 | 86 | 205 | 60 | 94 | 25 | 39 | 170 | 15 | 20 | M 12 |
| SNI 608 | 3,1 | 35 | 90 | 60 | 110 | 96 | 205 | 60 | 104 | 25 | 41 | 170 | 15 | 20 | M 12 |
| SNI 509 | 2,9 | 40 | 85 | 60 | 110 | 86 | 205 | 60 | 96 | 25 | 30 | 170 | 15 | 20 | M 12 |
| SNI 609 | 4,5 | 40 | 100 | 70 | 128 | 108 | 255 | 70 | 118 | 28 | 44 | 210 | 18 | 24 | M 16 |
| SNI 510 | 3,1 | 45 | 90 | 60 | 113 | 92 | 205 | 60 | 102 | 25 | 41 | 170 | 15 | 20 | M 12 |
| SNI 610 | 5,0 | 45 | 110 | 70 | 132 | 118 | 255 | 70 | 128 | 30 | 48 | 210 | 18 | 24 | M 16 |

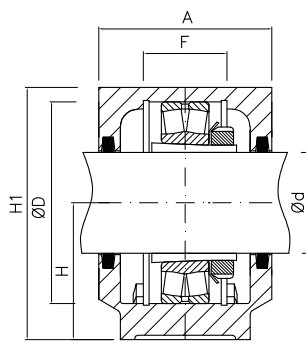
Plummer Block (split)

Series SNI 5 and SNI 6

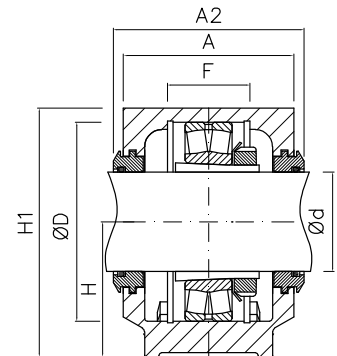
For self aligning ball bearings or spherical roller bearings with adapter sleeve



Housing with double lip seal



Housing with felt seal



Housing with labyrinth seal

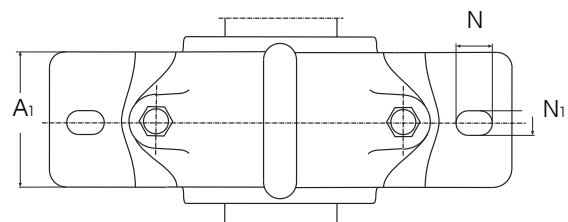
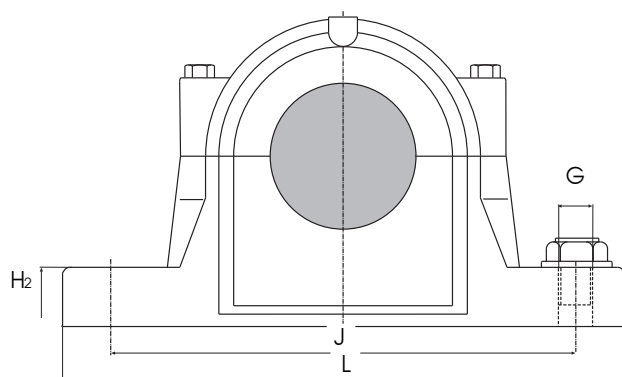
| Reference Housing | Lip seal | Labyrinth seal | End cover | Housing with felt seal | End cover | Matching bearing with Adapter sleeve | Fixing ring Qty and ref No |
|----------------------|----------|----------------|------------------|------------------------|-----------|--------------------------------------|----------------------------|
| SNI 506 | LDZ 506 | TSI 506 | DK 506 UA | SNI 506 | DK 506 NA | 1206 K H 206 | 2 x FR 8/62 |
| | | | | | | 2206 K H 306 | 2 x FR 6/62 |
| | | | | | | 22206 K H 306 | 2 x FR 6/62 |
| SNI 507 - 606 | LDZ 606 | TSI 606 | DK 507 UA | SNI 606 | DK 506 NA | 1306 K H 306 | 2 x FR 7,5/72 |
| | | | | | | 2306 K H 2306 | 2 x FR 3,5/72 |
| SNI 507 - 606 | LDZ 507 | TSI 507 | DK 507 UA | SNI 507 | DK 507 NA | 1207 K H 207 | 2 x FR 8,5/72 |
| | | | | | | 2207 K H 307 | 2 x FR 5,5/72 |
| | | | | | | 22207 K H 307 | 2 x FR 5,5/72 |
| SNI 508 - 607 | LDZ 607 | TSI 607 | DK 508 UA | SNI 607 | DK 507 NA | 1307 K H 307 | 2 x FR 9/80 |
| | | | | | | 2307 K H 2307 | 2 x FR 4/80 |
| SNI 508 - 607 | LDZ 508 | TSI 508 | DK 508 UA | SNI 508 | DK 508 NA | 1208 K H 208 | 2 x FR 10,5/80 |
| | | | | | | 2208 K H 308 | 2 x FR 8/80 |
| | | | | | | 22208 K H 308 | 2 x FR 8/80 |
| SNI 510 - 608 | LDZ 608 | TSI 608 | DK 511 UA | SNI 608 | DK 508 NA | 1308 K H 308 | 2 x FR 9/90 |
| | | | | | | 2308 K H 2308 | 2 x FR 4/90 |
| | | | | | | 21308 K H 308 | 2 x FR 9/90 |
| SNI 509 | LDZ 509 | TSI 509 | DK 509 UA | SNI 509 | DK 509 NA | 1209 K H 209 | 2 x FR 5,5/85 |
| | | | | | | 2209 K H 309 | 2 x FR 3,5/85 |
| | | | | | | 22209 K H 309 | 2 x FR 3,5/85 |
| SNI 511 - 609 | LDZ 609 | TSI 609 | DK 512 NA-511 UA | SNI 609 | DK 509 NA | 1309 K H 309 | 2 x FR 9,5/100 |
| | | | | | | 2309 K H 2309 | 2 x FR 4/100 |
| | | | | | | 21309 K H 309 | 2 x FR 9,5/100 |
| SNI 510 - 608 | LDZ 510 | TSI 510 | DK 511 NA-510 UA | SNI 510 | DK 510 NA | 1210 K H 210 | 2 x FR 10,5/90 |
| | | | | | | 2210 K H 310 | 2 x FR 9/90 |
| | | | | | | 22210 K H 310 | 2 x FR 9/90 |
| SNI 512 - 610 | LDZ 610 | TSI 610 | DK 513 NA-512 UA | SNI 610 | DK 610 NA | 1310 K H 310 | 2 x FR 10,5/110 |
| | | | | | | 2310 K H 2310 | 2 x FR 4/110 |
| | | | | | | 21310 K H 310 | 2 x FR 10,5/110 |
| | | | | | | 22310 K H 2310 | 2 x FR 4/110 |

* for other seals see on page 7

Plummer Block (split)

Series SNI 5 and SNI 6

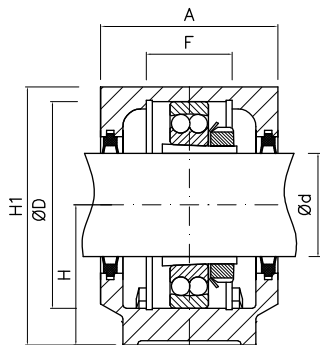
For self aligning ball bearings or spherical roller bearings with adapter sleeve



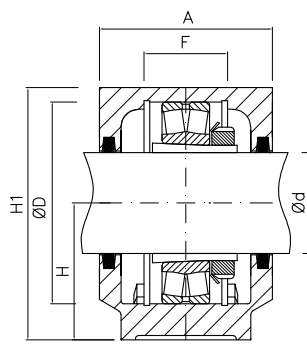
| Housing Ref No | Weight kg | d ₁ | D ^{H8} | H | H ₁ | A | L mm | A ₁ | A ₂ | H ₂ | F | J | N ₁ | N | G |
|----------------|-----------|----------------|-----------------|-----|----------------|-----|------|----------------|----------------|----------------|----|-----|----------------|----|------|
| SNI 511 | 4,5 | 50 | 100 | 70 | 127 | 95 | 255 | 70 | 105 | 28 | 44 | 210 | 18 | 24 | M 16 |
| SNI 611 | 6,5 | 50 | 120 | 80 | 148 | 110 | 275 | 80 | 120 | 30 | 51 | 230 | 18 | 24 | M 16 |
| SNI 512 | 5,0 | 55 | 110 | 70 | 133 | 105 | 255 | 70 | 115 | 30 | 48 | 210 | 18 | 24 | M 16 |
| SNI 612 | 7,0 | 55 | 130 | 80 | 154 | 115 | 280 | 80 | 125 | 30 | 56 | 230 | 18 | 24 | M 16 |
| SNI 513 | 6,5 | 60 | 120 | 80 | 148 | 110 | 275 | 80 | 120 | 30 | 51 | 230 | 18 | 24 | M 16 |
| SNI 613 | 9,8 | 60 | 140 | 95 | 175 | 120 | 315 | 90 | 130 | 32 | 58 | 260 | 22 | 28 | M 20 |
| SNI 515 | 7,0 | 65 | 130 | 80 | 154 | 115 | 280 | 80 | 125 | 30 | 56 | 230 | 18 | 24 | M 16 |
| SNI 615 | 12,5 | 65 | 160 | 100 | 191 | 140 | 345 | 100 | 150 | 35 | 65 | 290 | 22 | 28 | M 20 |

Series SNI 5 and SNI 6

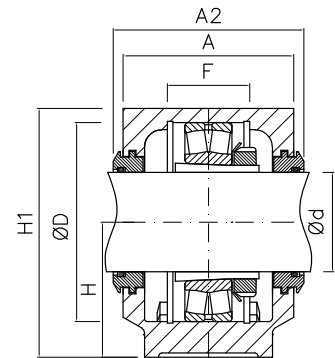
For self aligning ball bearings or spherical roller bearings with adapter sleeve



Housing with double lip seal



Housing with felt seal



Housing with labyrinth seal

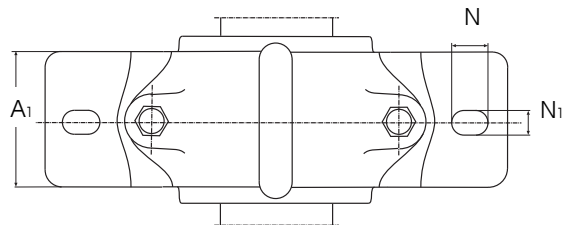
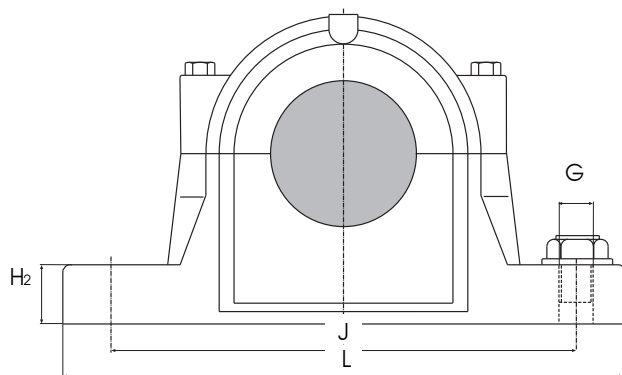
| Reference Housing | Lip seal | Labyrinth seal | End cover | Housing with felt seal | End cover | Matching bearing with Adapter sleeve | Fixing ring Qty and ref No |
|--------------------|----------|----------------|------------------|------------------------|------------------|--------------------------------------|----------------------------|
| SNI 511-609 | LDZ 511 | TSI 511 | DK 512 NA-511 UA | SNI 511 | DK 511 NA-510 UA | 1211 K H 211 | 2 x FR 11,5/100 |
| | | | | | | 2211 K H 311 | 2 x FR 9,5/100 |
| | | | | | | 22211 K H 311 | 2 x FR 9,5/100 |
| SNI 513-611 | LDZ 611 | TSI 611 | DK 515 NA-513 UA | SNI 611 | DK 511 NA-510 UA | 1311 K H 311 | 2 x FR 11/120 |
| | | | | | | 2311 K H 2311 | 2 x FR 4/120 |
| | | | | | | 21311 K H 311 | 2 x FR 11/120 |
| | | | | | | 22311 K H 2311 | 2 x FR 4/120 |
| SNI 512-610 | LDZ 512 | TSI 512 | DK 513 NA-512 UA | SNI 512 | DK 512 NA-511 UA | 1212 K H 212 | 2 x FR 13/110 |
| | | | | | | 2212 K H 312 | 2 x FR 10/110 |
| | | | | | | 22212 K H 312 | 2 x FR 10/110 |
| SNI 515-612 | LDZ 612 | TSI 612 | DK 517 NA-515 UA | SNI 612 | DK 512 NA-511 UA | 1312 K H 312 | 2 x FR 12,5/130 |
| | | | | | | 2312 K H 2312 | 2 x FR 5/130 |
| | | | | | | 21312 K H 312 | 2 x FR 12,5/130 |
| | | | | | | 22312 K H 2312 | 2 x FR 5/130 |
| SNI 513-611 | LDZ 513 | TSI 513 | DK 515 NA-513 UA | SNI 513 | DK 513 NA-512 UA | 1213 K H 213 | 2 x FR 14/120 |
| | | | | | | 2213 K H 313 | 2 x FR 10/120 |
| | | | | | | 22213 K H 313 | 2 x FR 10/120 |
| SNI 516-613 | LDZ 613 | TSI 613 | DK 518 NA-516 UA | SNI 613 | DK 513 NA-512 UA | 1313 K H 313 | 2 x FR 12,5/140 |
| | | | | | | 2313 K H 2313 | 2 x FR 5/140 |
| | | | | | | 21313 K H 313 | 2 x FR 12,5/140 |
| | | | | | | 22313 K H 2313 | 2 x FR 5/140 |
| SNI 515-612 | LDZ 515 | TSI 515 | DK 517 NA-515 UA | SNI 515 | DK 515 NA-513 UA | 1215 K H 215 | 2 x FR 15,5/130 |
| | | | | | | 2215 K H 315 | 2 x FR 12,5/130 |
| | | | | | | 22215 K H 315 | 2 x FR 12,5/130 |
| SNI 518-615 | LDZ 615 | TSI 615 | DK 520 NA-518 UA | SNI 615 | DK 515 NA-513 UA | 1315 K H 315 | 2 x FR 14/160 |
| | | | | | | 2315 K H 2315 | 2 x FR 5/160 |
| | | | | | | 21315 K H 315 | 2 x FR 14/160 |
| | | | | | | 22315 K H 2315 | 2 x FR 5/160 |

* for other seals see on page 7

Plummer Block (split)

Series SNI 5 and SNI 6

For self aligning ball bearings or spherical roller bearings with adapter sleeve

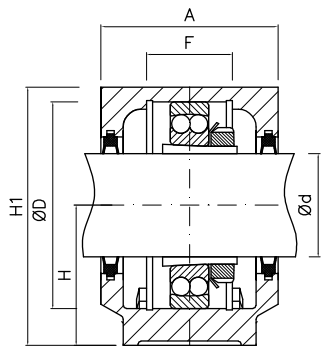


| Housing Ref No | Weight kg | d ₁ | D ^{H8} | H | H ₁ | A | L mm | A ₁ | A ₂ | H ₂ | F | J | N ₁ | N | G |
|----------------|-----------|----------------|-----------------|-----|----------------|-----|------|----------------|----------------|----------------|----|-----|----------------|----|------|
| SNI 516 | 9,6 | 70 | 140 | 95 | 175 | 120 | 315 | 90 | 134 | 32 | 58 | 260 | 22 | 28 | M 20 |
| SNI 616 | 14,0 | 70 | 170 | 112 | 208 | 145 | 345 | 100 | 159 | 35 | 68 | 290 | 22 | 28 | M 20 |
| SNI 517 | 10,0 | 75 | 150 | 95 | 181 | 125 | 320 | 90 | 139 | 32 | 61 | 260 | 22 | 28 | M 20 |
| SNI 617 | 17,0 | 75 | 180 | 112 | 214 | 160 | 380 | 110 | 174 | 40 | 70 | 320 | 26 | 32 | M 24 |
| SNI 518 | 12,5 | 80 | 160 | 100 | 191 | 140 | 345 | 100 | 155 | 35 | 65 | 290 | 22 | 28 | M 20 |
| SNI 519 | 14,0 | 85 | 170 | 112 | 208 | 145 | 345 | 100 | 160 | 35 | 68 | 290 | 22 | 28 | M 20 |
| SNI 619 | 22,0 | 85 | 200 | 125 | 237 | 175 | 410 | 120 | 190 | 45 | 80 | 350 | 26 | 32 | M 24 |

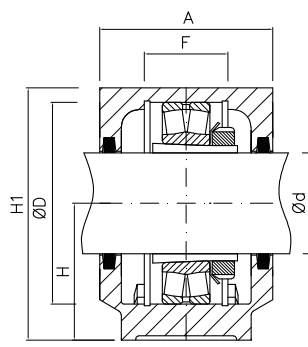
Plummer Block (split)

Series SNI 5 and SNI 6

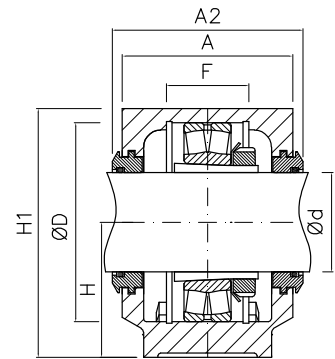
For self aligning ball bearings or spherical roller bearings with adapter sleeve



Housing with double lip seal



Housing with felt seal



Housing with labyrinth seal

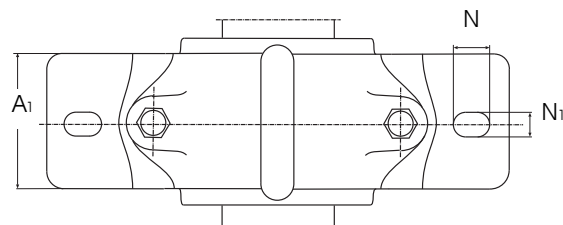
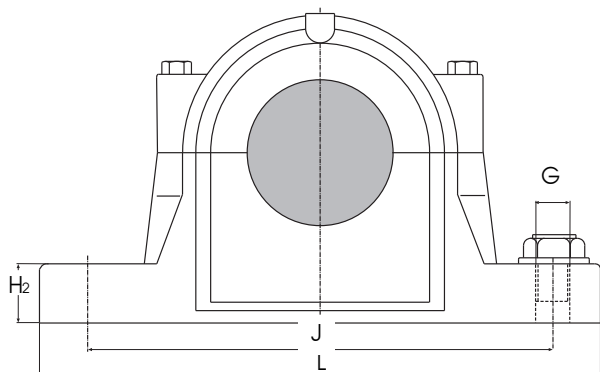
| Reference Housing | Lip seal | Labyrinth seal | End cover | Housing with felt seal | End cover | Matching bearing with Adapter sleeve | Fixing ring Qty and ref No |
|--------------------|----------|----------------|------------------|------------------------|------------------|--------------------------------------|----------------------------|
| SNI 516-613 | LDZ 516 | TSI 516 | DK 518 NA-516 UA | SNI 516 | DK 516 NA | 1216 K H 216 | 2 x FR 16/140 |
| | | | | | | 2216 K H 316 | 2 x FR 12,5/140 |
| | | | | | | 22216 K H 316 | 2 x FR 12,5/140 |
| SNI 519-616 | LDZ 616 | TSI 616 | DK 526 NA-519 UA | SNI 616 | DK 516 NA | 1316 K H 316 | 2 x FR 14,5/170 |
| | | | | | | 2316 K H 2316 | 2 x FR 5/170 |
| | | | | | | 21316 K H 316 | 2 x FR 14,5/170 |
| | | | | | | 22316 K H 2316 | 2 x FR 5/170 |
| SNI 517 | LDZ 517 | TSI 517 | DK 519 NA-517 UA | SNI 517 | DK 517 NA-515 UA | 1217 K H 217 | 2 x FR 16,5/150 |
| | | | | | | 2217 K H 317 | 2 x FR 12,5/150 |
| | | | | | | 22217 K H 317 | 2 x FR 12,5/150 |
| SNI 520-617 | LDZ 617 | TSI 617 | DK 520 UA | SNI 617 | DK 517 NA-515 UA | 1317 K H 317 | 2 x FR 14,5/180 |
| | | | | | | 2317 K H 2317 | 2 x FR 5/180 |
| | | | | | | 21317 K H 317 | 2 x FR 14,5/180 |
| | | | | | | 22317 K H 2317 | 2 x FR 5/180 |
| SNI 518-615 | LDZ 518 | TSI 518 | DK 520 NA-518 UA | SNI 518 | DK 518 NA-516 UA | 1218 K H 218 | 2 x FR 17,5/160 |
| | | | | | | 2218 K H 318 | 2 x FR 12,5/160 |
| | | | | | | 22218 K H 318 | 2 x FR 12,5/160 |
| | | | | | | 23218 K H 2318 | 2 x FR 6,25/160 |
| SNI 519-616 | LDZ 519 | TSI 519 | DK 526 NA-519 UA | SNI 519 | DK 519 NA-517 UA | 1219 K H 219 | 2 x FR 18/170 |
| | | | | | | 2219 K H 319 | 2 x FR 12,5/170 |
| | | | | | | 22219 K H 319 | 2 x FR 12,5/170 |
| SNI 522-619 | LDZ 619 | TSI 619 | DK 528 NA-522 UA | SNI 619 | DK 519 NA-517 UA | 1319 K H 319 | 2 x FR 17,5/200 |
| | | | | | | 2319 K H 2319 | 2 x FR 6,5/200 |
| | | | | | | 21319 K H 319 | 2 x FR 17,5/200 |
| | | | | | | 22319 K H 2319 | 2 x FR 6,5/200 |

* for other seals see on page 7

Plummer Block (split)

Series SNI 5 and SNI 6

For self aligning ball bearings or spherical roller bearings with adapter sleeve

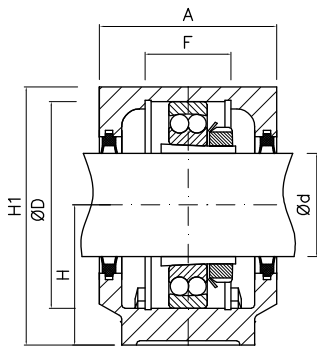


| Housing Ref No | Weight kg | d ₁ | D ^{H8} | H | H ₁ | A | L mm | A ₁ | A ₂ | H ₂ | F | J | N ₁ | N | G |
|----------------|-----------|----------------|-----------------|-----|----------------|-----|------|----------------|----------------|----------------|-----|-----|----------------|----|------|
| SNI 520 | 17,0 | 90 | 180 | 112 | 214 | 160 | 380 | 110 | 175 | 40 | 70 | 320 | 26 | 32 | M 24 |
| SNI 620 | 26,0 | 90 | 215 | 140 | 271 | 185 | 410 | 120 | 200 | 45 | 86 | 350 | 26 | 32 | M 24 |
| SNI 522 | 22,0 | 100 | 200 | 125 | 237 | 175 | 410 | 120 | 190 | 45 | 80 | 350 | 26 | 32 | M 24 |
| SNI 524 | 26,0 | 110 | 215 | 140 | 271 | 185 | 410 | 120 | 199 | 45 | 86 | 350 | 26 | 32 | M 24 |
| SNI 526 | 32,0 | 115 | 230 | 150 | 290 | 190 | 445 | 130 | 205 | 50 | 90 | 380 | 28 | 35 | M 24 |
| SNI 528 | 42,0 | 125 | 250 | 150 | 302 | 205 | 500 | 150 | 220 | 50 | 98 | 420 | 35 | 42 | M 30 |
| SNI 530 | 50,0 | 135 | 270 | 160 | 323 | 220 | 530 | 160 | 235 | 60 | 106 | 450 | 35 | 42 | M 30 |
| SNI 532 | 56,0 | 140 | 290 | 170 | 344 | 235 | 550 | 160 | 250 | 60 | 114 | 470 | 35 | 42 | M 30 |

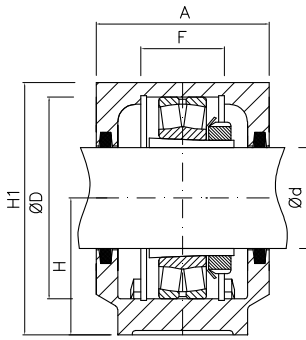
Plummer Block (split)

Series SNI 5 and SNI 6

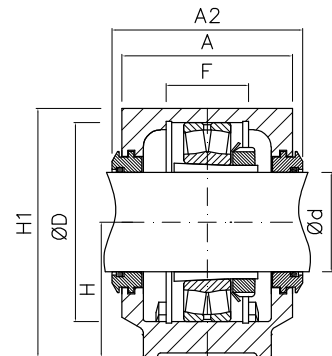
For self aligning ball bearings or spherical roller bearings with adapter sleeve



Housing with double lip seal



Housing with felt seal



Housing with labyrinth seal

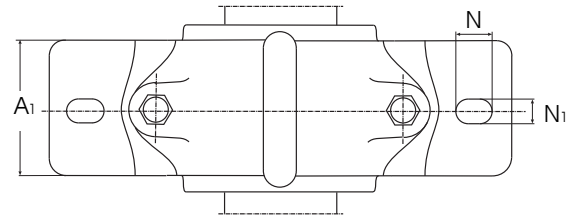
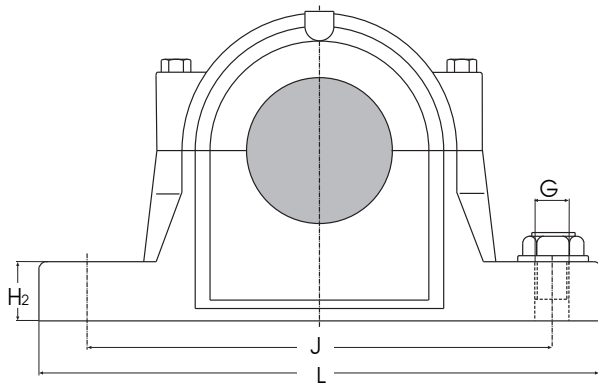
| Reference Housing | Lip seal | Labyrinth seal | End cover | Housing with felt seal | End cover | Matching bearing with Adapter sleeve | Fixing ring Qty and ref No |
|--------------------|----------|----------------|------------------|------------------------|------------------|--------------------------------------|----------------------------|
| SNI 520-617 | LDZ 520 | TSI 520 | DK 520 UA | SNI 520 | DK 520 NA-518 UA | 1220 K H 220 | 2 x FR 18/180 |
| | | | | | | 2220 K H 320 | 2 x FR 12/180 |
| | | | | | | 22220 K H 320 | 2 x FR 12/180 |
| | | | | | | 23220 K H 2320 | 2 x FR 4,85/180 |
| SNI 524-620 | LDZ 620 | TSI 620 | DK 530 NA-524 UA | SNI 620 | DK 520 NA-518UA | 1320 K H 320 | 2 x FR 19,5/215 |
| | | | | | | 2320 K H 2320 | 2 x FR 6,5/215 |
| | | | | | | 21320 K H 320 | 2 x FR 19,5/215 |
| | | | | | | 22320 K H 2320 | 2 x FR 6,5/215 |
| SNI 522-619 | LDZ 522 | TSI 522 | DK 528 NA-522 UA | SNI 522 | DK 522 NA | 1222 K H 222 | 2 x FR 21/200 |
| | | | | | | 2222 K H 322 | 2 x FR 13,5/200 |
| | | | | | | 22222 K H 322 | 2 x FR 13,5/200 |
| | | | | | | 23222 K H 2322 | 2 x FR 5,1/200 |
| SNI 524-620 | LDZ 524 | TSI 524 | DK 530 NA-524 UA | SNI 524 | DK 524 NA | 22224 K H 3124 | 2 x FR 14/215 |
| | | | | | | 23224 K H 2324 | 2 x FR 5/215 |
| SNI 526 | LDZ 524 | TSI 526 | DK 532 NA-526 UA | SNI 526 | DK 526 NA-519 UA | 22226 K H 3126 | 2 x FR 13/230 |
| | | | | | | 23226 K H 2326 | 2 x FR 5/230 |
| SNI 528 | LDZ 528 | TSI 528 | DK 528 UA | SNI 528 | DK 528 NA-522 UA | 22228 K H 3128 | 2 x FR 15/250 |
| | | | | | | 23228 K H 2328 | 2 x FR 5/250 |
| SNI 530 | LDZ 530 | TSI 530 | DK 530 UA | SNI 530 | DK 530 NA-524 UA | 22230 K H 3130 | 2 x FR 16,5/270 |
| | | | | | | 23230 K H 2330 | 2 x FR 5/270 |
| SNI 532 | LDZ 532 | TSI 532 | DK 532 UA | SNI 532 | DK 532 NA-526 UA | 22232 K H 3132 | 2 x FR 17/290 |
| | | | | | | 23232 K H 2332 | 2 x FR 5/290 |

* for other seals see on page 7

Plummer Block (split)

Series SNI 2 and SNI 3

For self-aligning ball bearings or spherical roller bearings
with cylindrical bore



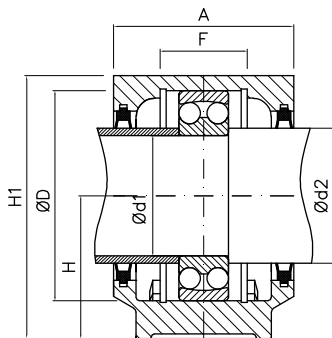
| Housing Ref No | Weight kg | d ₁ | d ₂ | D ^{H8} | H | H ₁ | A mm | L | A ₁ | A ₂ | H ₂ | F | J | N ₁ | N | G |
|----------------|-----------|----------------|----------------|-----------------|----|----------------|------|-----|----------------|----------------|----------------|----|-----|----------------|----|------|
| SNI 208 | 2,8 | 40 | 50 | 80 | 60 | 105 | 86 | 205 | 60 | 94 | 25 | 39 | 170 | 15 | 20 | M 12 |
| SNI 308 | 3,1 | 40 | 50 | 90 | 60 | 110 | 96 | 205 | 60 | 104 | 25 | 41 | 170 | 15 | 20 | M 12 |
| SNI 209 | 2,9 | 45 | 55 | 85 | 60 | 110 | 86 | 205 | 60 | 96 | 25 | 30 | 170 | 15 | 20 | M 12 |
| SNI 309 | 4,5 | 45 | 55 | 100 | 70 | 128 | 108 | 255 | 70 | 118 | 28 | 44 | 210 | 18 | 24 | M 16 |
| SNI 210 | 3,1 | 50 | 60 | 90 | 60 | 113 | 92 | 205 | 60 | 102 | 25 | 41 | 170 | 15 | 20 | M 12 |
| SNI 310 | 5,0 | 50 | 60 | 110 | 70 | 132 | 118 | 255 | 70 | 128 | 30 | 48 | 210 | 18 | 24 | M 16 |

Plummer Block (split)

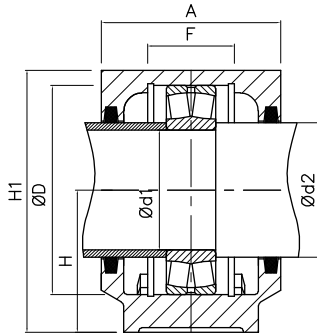
Series SNI 2 and SNI 3

For self-aligning ball bearings or spherical roller bearings
with cylindrical bore

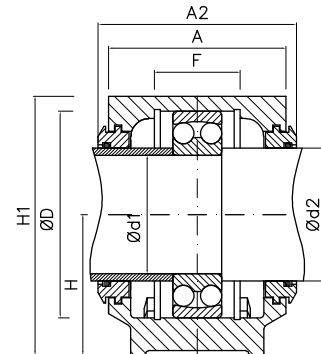
(distance sleeves are not included in delivery)



Housing with double lip seal



Housing with felt seal



Housing with labyrinth seal

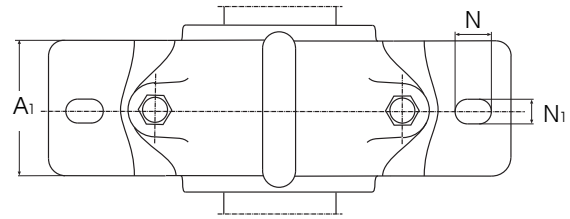
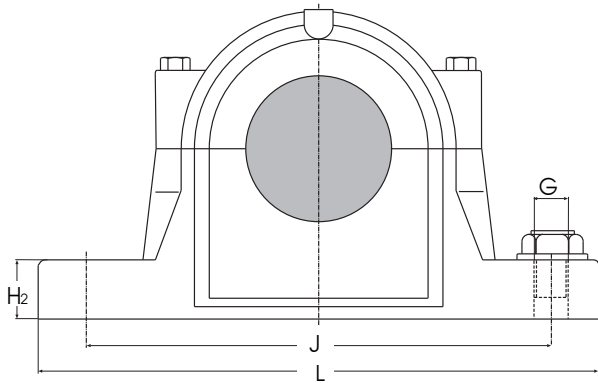
| Reference Housing | Lip seal | Labyrinth seal | End cover | Housing with felt seal | End cover | Matching bearing with Adapter sleeve | Fixing ring Qty and ref No |
|--------------------|----------|----------------|------------------|------------------------|------------------|--------------------------------------|----------------------------|
| SNI 208 | LDZ 208 | TSI 208 | DK 511 NA-510 UA | SNI 208 | DK 511 NA-510 UA | 1208 | 2 x FR 10,5/80 |
| | | | | | | 2208 | 2 x FR 8/80 |
| | | | | | | 22208 | 2 x FR 8/80 |
| SNI 510-608 | LDZ 308 | TSI 308 | DK 511 NA-510 UA | SNI 308 | DK 511 NA-510 UA | 1308 | 2 x FR 9/90 |
| | | | | | | 2308 | 2 x FR 4/90 |
| | | | | | | 21308 | 2 x FR 9/90 |
| | | | | | | 22308 | 2 x FR 4/90 |
| SNI 209 | LDZ 209 | TSI 209 | DK 512 NA-511 UA | SNI 209 | DK 512 NA-511 UA | 1209 | 2 x FR 5,5/85 |
| | | | | | | 2209 | 2 x FR 3,5/85 |
| | | | | | | 22209 | 2 x FR 3,5/85 |
| SNI 511-609 | LDZ 309 | TSI 309 | DK 512 NA-511 UA | SNI 309 | DK 512 NA-511 UA | 1309 | 2 x FR 9,5/100 |
| | | | | | | 2309 | 2 x FR 4/100 |
| | | | | | | 21309 | 2 x FR 9,5/100 |
| | | | | | | 22309 | 2 x FR 4/100 |
| SNI 210 | LDZ 210 | TSI 210 | DK 513 NA-512 UA | SNI 210 | DK 513 NA-512 UA | 1210 | 2 x FR 10,5/90 |
| | | | | | | 2210 | 2 x FR 9/90 |
| | | | | | | 22210 | 2 x FR 9/90 |
| SNI 512-610 | LDZ 310 | TSI 310 | DK 513 NA-512 UA | SNI 310 | DK 513 NA-512 UA | 1310 | 2 x FR 10,5/110 |
| | | | | | | 2310 | 2 x FR 4/110 |
| | | | | | | 21310 | 2 x FR 10,5/110 |
| | | | | | | 22310 | 2 x FR 4/110 |

* for other seals see on page 7

Plummer Block (split)

Series SNI 2 and SNI 3

For self-aligning ball bearings or spherical roller bearings
with cylindrical bore



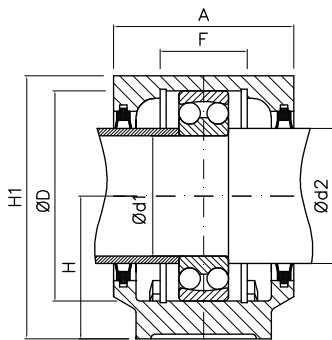
| Housing Ref No | Weight kg | d ₁ | d ₂ | D ^{H8} | H | H ₁ | A mm | L | A ₁ | A ₂ | H ₂ | F | J | N ₁ | N | G |
|----------------|-----------|----------------|----------------|-----------------|-----|----------------|------|-----|----------------|----------------|----------------|----|-----|----------------|----|------|
| SNI 211 | 4,5 | 55 | 65 | 100 | 70 | 127 | 95 | 255 | 70 | 105 | 28 | 44 | 210 | 18 | 24 | M 16 |
| SNI 311 | 6,5 | 55 | 65 | 120 | 80 | 148 | 110 | 275 | 80 | 120 | 30 | 51 | 230 | 18 | 24 | M 16 |
| SNI 212 | 5,0 | 60 | 70 | 110 | 70 | 133 | 105 | 255 | 70 | 115 | 30 | 48 | 210 | 18 | 24 | M 16 |
| SNI 312 | 7,0 | 60 | 70 | 130 | 80 | 154 | 115 | 280 | 80 | 125 | 30 | 56 | 230 | 18 | 24 | M 16 |
| SNI 213 | 6,5 | 65 | 75 | 120 | 80 | 148 | 110 | 275 | 80 | 120 | 30 | 51 | 230 | 18 | 20 | M 16 |
| SNI 313 | 9,8 | 65 | 75 | 140 | 95 | 175 | 120 | 315 | 90 | 130 | 32 | 58 | 260 | 22 | 28 | M 20 |
| SNI 215 | 7,0 | 75 | 85 | 130 | 80 | 154 | 115 | 280 | 80 | 125 | 30 | 56 | 230 | 18 | 24 | M 16 |
| SNI 315 | 12,5 | 75 | 85 | 160 | 100 | 191 | 140 | 345 | 100 | 150 | 35 | 65 | 290 | 22 | 28 | M 20 |

Plummer Block (split)

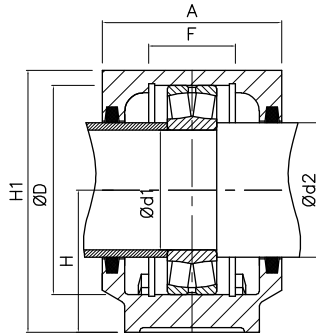
Series SNI 2 and SNI 3

For self-aligning ball bearings or spherical roller bearings
with cylindrical bore

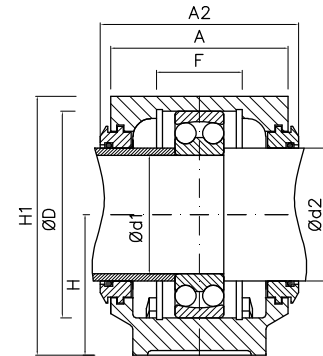
(distance sleeves are not included in delivery)



Housing with double lip seal



Housing with felt seal



Housing with labyrinth seal

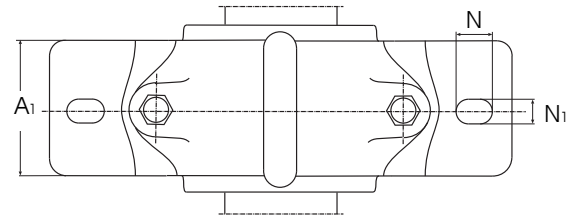
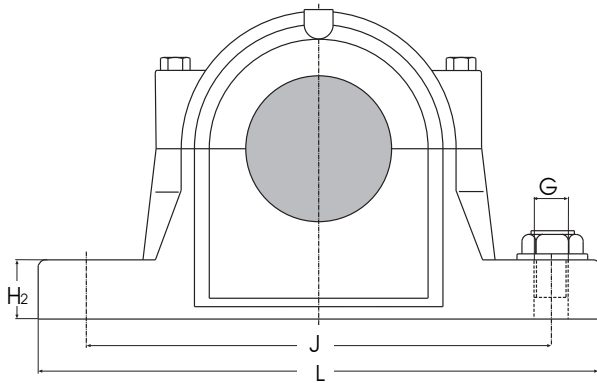
| Reference | | | | | | Matching bearing | Fixing ring |
|--------------------|----------|----------------|------------------|------------------------|------------------|---------------------|-----------------|
| Housing | Lip seal | Labyrinth seal | End cover | Housing with felt seal | End cover | with Adapter sleeve | Qty and ref No |
| SNI 211 | LDZ 211 | TSI 211 | DK 515 NA-513 UA | SNI 211 | DK 515 NA-513 UA | 1211 | 2 x FR 11,5/100 |
| | | | | | | 2211 | 2 x FR 9,5/100 |
| | | | | | | 22211 | 2 x FR 9,5/100 |
| SNI 513-611 | LDZ 311 | TSI 311 | DK 515 NA-513 UA | SNI 311 | DK 515 NA-513 UA | 1311 | 2 x FR 11/120 |
| | | | | | | 2311 | 2 x FR 4/120 |
| | | | | | | 21311 | 2 x FR 11/120 |
| | | | | | | 22311 | 2 x FR 4/120 |
| SNI 212 | LDZ 212 | TSI 212 | DK 517 NA-515 UA | SNI 212 | DK 516 NA | 1212 | 2 x FR 13/110 |
| | | | | | | 2212 | 2 x FR 10/110 |
| | | | | | | 22212 | 2 x FR 10/110 |
| SNI 515-612 | LDZ 312 | TSI 312 | DK 517 NA-515 UA | SNI 312 | DK 516 NA | 1312 | 2 x FR 12,5/130 |
| | | | | | | 2312 | 2 x FR 5/130 |
| | | | | | | 21312 | 2 x FR 12,5/130 |
| SNI 213 | LDZ 213 | TSI 213 | DK 518 NA-516 UA | SNI 213 | DK 517 NA-515 UA | 1213 | 2 x FR 14/120 |
| | | | | | | 2213 | 2 x FR 10/120 |
| | | | | | | 22213 | 2 x FR 10/120 |
| SNI 516-613 | LDZ 313 | TSI 313 | DK 518 NA-516 UA | SNI 313 | DK 517 NA-515 UA | 1313 | 2 x FR 12,5/140 |
| | | | | | | 2313 | 2 x FR 5/140 |
| | | | | | | 21313 | 2 x FR 12,5/140 |
| SNI 215 | LDZ 215 | TSI 215 | DK 520 NA-518 UA | SNI 215 | DK 519 NA-517 UA | 1215 | 2 x FR 15,5/130 |
| | | | | | | 2215 | 2 x FR 12,5/130 |
| | | | | | | 22215 | 2 x FR 12,5/130 |
| SNI 518-615 | LDZ 315 | TSI 315 | DK 520 NA-518 UA | SNI 315 | DK 519 NA-517 UA | 1315 | 2 x FR 14/160 |
| | | | | | | 2315 | 2 x FR 5/160 |
| | | | | | | 21315 | 2 x FR 14/160 |
| | | | | | | 22315 | 2 x FR 5/160 |

* for other seals see on page 7

Plummer Block (split)

Series SNI 2 and SNI 3

For self-aligning ball bearings or spherical roller bearings
with cylindrical bore



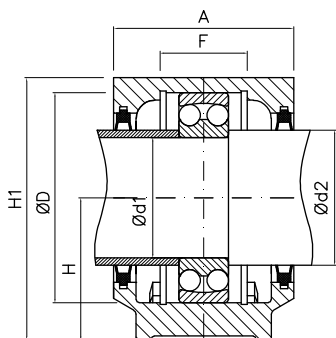
| Housing Ref No | Weight kg | d ₁ | d ₂ | D ^{H8} | H | H ₁ | A mm | L | A ₁ | A ₂ | H ₂ | F | J | N ₁ | N | G |
|----------------|-----------|----------------|----------------|-----------------|-----|----------------|------|-----|----------------|----------------|----------------|----|-----|----------------|----|------|
| SNI 216 | 9,6 | 80 | 90 | 140 | 95 | 175 | 120 | 315 | 90 | 134 | 32 | 58 | 260 | 22 | 28 | M 16 |
| SNI 316 | 14,0 | 80 | 90 | 170 | 112 | 208 | 145 | 345 | 100 | 159 | 35 | 68 | 290 | 22 | 28 | M 16 |
| SNI 217 | 10,0 | 85 | 95 | 150 | 95 | 181 | 125 | 320 | 90 | 139 | 32 | 61 | 260 | 22 | 28 | M 16 |
| SNI 317 | 17,0 | 85 | 95 | 180 | 112 | 214 | 160 | 380 | 110 | 174 | 40 | 70 | 320 | 26 | 32 | M 16 |
| SNI 218 | 12,5 | 90 | 100 | 160 | 100 | 291 | 140 | 345 | 100 | 155 | 35 | 65 | 290 | 22 | 28 | M 16 |
| SNI 219 | 14,0 | 95 | 110 | 170 | 112 | 208 | 145 | 345 | 100 | 160 | 35 | 68 | 290 | 22 | 28 | M 16 |
| SNI 319 | 22,0 | 95 | 110 | 200 | 125 | 237 | 175 | 410 | 120 | 190 | 45 | 80 | 350 | 26 | 32 | M 20 |

Plummer Block (split)

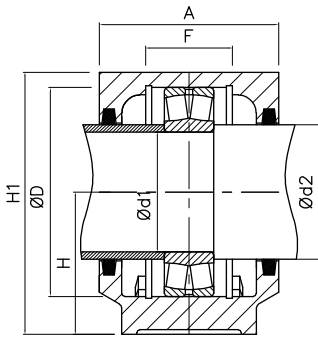
Series SNI 2 and SNI 3

For self-aligning ball bearings or spherical roller bearings
with cylindrical bore

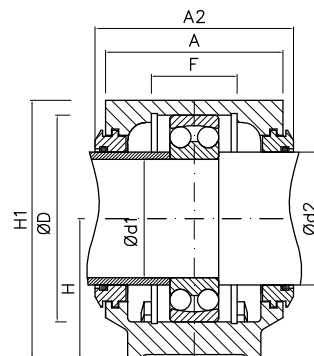
(distance sleeves are not included in delivery)



Housing with double lip seal



Housing with felt seal



Housing with labyrinth seal

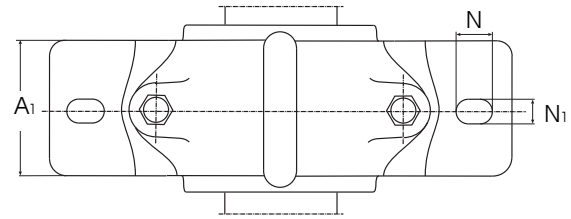
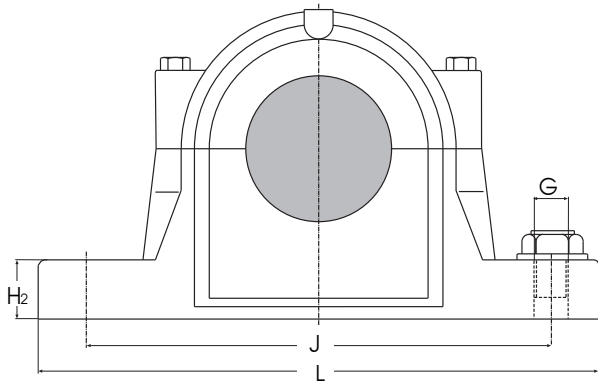
| Reference Housing | Lip seal | Labyrinth seal | End cover | Housing with felt seal | End cover | Matching bearing with Adapter sleeve | Fixing ring Qty and ref No |
|--------------------|----------|----------------|------------------|------------------------|------------------|--------------------------------------|----------------------------|
| SNI 216 | LDZ 216 | TSI 216 | DK 216 UA | SNI 216 | DK 520 NA-518 UA | 1216 | 2 x FR 16/140 |
| | | | | | | 2216 | 2 x FR 12,5/140 |
| | | | | | | 22216 | 2 x FR 12,5/140 |
| SNI 519-616 | LDZ 316 | TSI 316 | DK 526 NA-519 UA | SNI 316 | DK 520 NA-518 UA | 1316 | 2 x FR 14,5/170 |
| | | | | | | 2316 | 2 x FR 5/170 |
| | | | | | | 21316 | 2 x FR 14,5/170 |
| | | | | | | 22316 | 2 x FR 5/170 |
| SNI 217 | LDZ 217 | TSI 217 | DK 217 UA | SNI 217 | | 1217 | 2 x FR 16,5/150 |
| | | | | | | 2217 | 2 x FR 12,5/150 |
| | | | | | | 22217 | 2 x FR 12,5/150 |
| SNI 520-617 | LDZ 317 | TSI 317 | DK 520 UA | SNI 317 | | 1317 | 2 x FR 14,5/180 |
| | | | | | | 2317 | 2 x FR 5/180 |
| | | | | | | 21317 | 2 x FR 14,5/180 |
| | | | | | | 22317 | 2 x FR 5/180 |
| SNI 218 | LDZ 218 | TSI 218 | DK 218 UA | SNI 218 | DK 522 NA | 1218 | 2 x FR 17,5/160 |
| | | | | | | 2218 | 2 x FR 12,5/160 |
| | | | | | | 22218 | 2 x FR 12,5/160 |
| | | | | | | 23218 | 2 x FR 6,25/160 |
| SNI 519-616 | LDZ 219 | TSI 219 | DK 526 NA-519 UA | SNI 219 | DK 524 NA | 1219 | 2 x FR 18/170 |
| | | | | | | 2219 | 2 x FR 12,5/170 |
| | | | | | | 22219 | 2 x FR 12,5/170 |
| SNI 522-619 | LDZ 319 | TSI 319 | DK 528 NA-522 UA | SNI 319 | DK 524 NA | 1319 | 2 x FR 17,5/200 |
| | | | | | | 2319 | 2 x FR 6,5/200 |
| | | | | | | 21319 | 2 x FR 17,5/200 |
| | | | | | | 22319 | 2 x FR 6,5/200 |

* for other seals see on page 7

Plummer Block (split)

Series SNI 2 and SNI 3

For self-aligning ball bearings or spherical roller bearings
with cylindrical bore



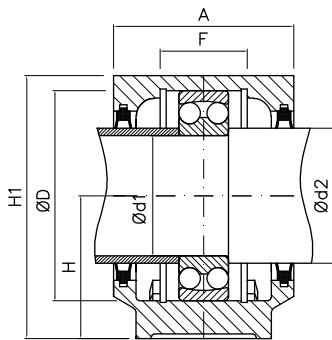
| Housing Ref No | Weight kg | d ₁ | d ₂ | D ^{H8} | H | H _i | A mm | L | A ₁ | A ₂ | H ₂ | F | J | N ₁ | N | G |
|----------------|-----------|----------------|----------------|-----------------|-----|----------------|------|-----|----------------|----------------|----------------|-----|-----|----------------|----|------|
| SNI 220 | 17,0 | 100 | 115 | 180 | 112 | 214 | 160 | 380 | 110 | 175 | 40 | 70 | 320 | 26 | 32 | M 24 |
| SNI 320 | 26,0 | 100 | 115 | 215 | 140 | 271 | 185 | 410 | 120 | 200 | 45 | 86 | 350 | 26 | 32 | M 24 |
| SNI 222 | 22,0 | 110 | 125 | 200 | 125 | 237 | 175 | 410 | 120 | 190 | 45 | 80 | 350 | 26 | 32 | M 24 |
| SNI 324 | 26,0 | 120 | 135 | 215 | 140 | 271 | 185 | 410 | 120 | 199 | 45 | 86 | 350 | 26 | 32 | M 24 |
| SNI 226 | 32,0 | 130 | 145 | 230 | 150 | 290 | 190 | 445 | 130 | 205 | 50 | 90 | 380 | 28 | 35 | M 24 |
| SNI 228 | 42,0 | 140 | 155 | 250 | 150 | 302 | 205 | 500 | 150 | 220 | 50 | 98 | 420 | 35 | 42 | M 30 |
| SNI 230 | 50,0 | 150 | 165 | 270 | 160 | 323 | 220 | 530 | 160 | 235 | 60 | 106 | 450 | 35 | 42 | M 30 |
| SNI 232 | 56,0 | 160 | 175 | 290 | 170 | 344 | 235 | 550 | 160 | 250 | 60 | 114 | 470 | 35 | 42 | M 30 |

Plummer Block (split)

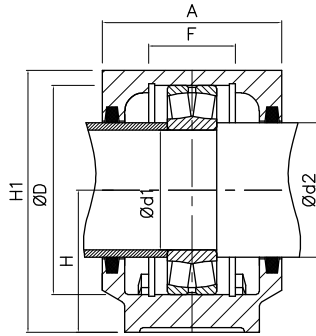
Series SNI 2 and SNI 3

For self-aligning ball bearings or spherical roller bearings
with cylindrical bore

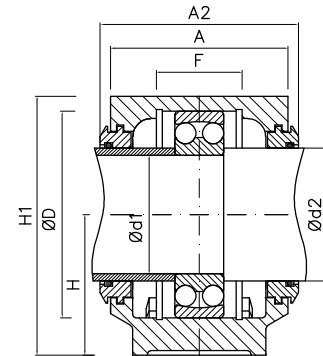
(distance sleeves are not included in delivery)



Housing with double lip seal



Housing with felt seal



Housing with labyrinth seal

| Reference Housing | Lip seal | Labyrinth seal | End cover | Housing with felt seal | End cover | Matching bearing with Adapter sleeve | Fixing ring Qty and ref No |
|--------------------|----------|----------------|------------------|------------------------|------------------|--------------------------------------|----------------------------|
| SNI 520-617 | LDZ 220 | TSI 220 | DK 520 UA | SNI 220 | DK 526 NA-519 UA | 1220 | 2 x FR 18/180 |
| | | | | | | 2220 | 2 x FR 12/180 |
| | | | | | | 22220 | 2 x FR 12/180 |
| | | | | | | 23220 | 2 x FR 4,85/180 |
| SNI 524-620 | LDZ 320 | TSI 320 | DK 530 NA-524 UA | SNI 320 | DK 526 NA-519 UA | 1320 | 2 x FR 19,5/215 |
| | | | | | | 2320 | 2 x FR 6,5/215 |
| | | | | | | 21320 | 2 x FR 19,5/215 |
| | | | | | | 22320 | 2 x FR 6,5/215 |
| SNI 522-619 | LDZ 222 | TSI 222 | DK 528 NA-522 UA | SNI 222 | DK 528 NA-522 UA | 1222 | 2 x FR 21/200 |
| | | | | | | 2222 | 2 x FR 13,5/200 |
| | | | | | | 22222 | 2 x FR 13,5/200 |
| | | | | | | 23222 | 2 x FR 5,1/200 |
| SNI 524-620 | LDZ 224 | TSI 224 | DK 530 NA-524 UA | SNI 224 | DK 530 NA-524 UA | 22224 | 2 x FR 14/215 |
| | | | | | | 23224 | 2 x FR 5/215 |
| SNI 226 | LDZ 226 | TSI 226 | DK 532 NA-526 UA | SNI 226 | | 22226 | 2 x FR 13/230 |
| | | | | | | 23226 | 2 x FR 5/230 |
| SNI 528 | LDZ 228 | TSI 228 | DK 528 UA | SNI 228 | | 22228 | 2 x FR 15/250 |
| | | | | | | 23228 | 2 x FR 5/250 |
| SNI 530 | LDZ 230 | TSI 230 | DK 530 UA | SNI 230 | | 22230 | 2 x FR 16,5/270 |
| | | | | | | 23230 | 2 x FR 5/270 |
| SNI 532 | LDZ 232 | TSI 232 | DK 532 UA | SNI 232 | | 22232 | 2 x FR 17/290 |
| | | | | | | 23232 | 2 x FR 5/290 |

* for other seals see on page 7