



Two Bearing Housings series PDNI and BL

These bearing units are mainly used in fan assemblies. They can however, be used without hesitation in other applications. e.g. in

- Circular saws
- Milling machine shafts
- Belt drives
- Or similar bearing applications

The bearing units PDNI and BL offer the following advantages

- Simple assembly
- Low maintenance costs
- Efficient sealing against dust and dirt
- Single piece housing (torsionally rigid)
- 6 possible bearing combinations allow it to be used for various requirements.

The housing body, cover and grease control disc are manufactured from grey cast iron GG20.

The two bearing housings are designed for grease lubrication and both bearing positions are equipped with grease nipples. The two bearing housings are supplied complete with seals and grease control disc.

The two bearing housings series PDNI and BL can also be supplied as a complete assembled bearing unit with shaft, bearing and grease filling (Shell Alvania R3). The incorporated shafts are made from Material St 52.3.

On request, other shaft materials are available.

Two Bearing Housings ZLGO

Two bearing housings ZLGO are fitted with a floating and a locating bearing. A cylindrical roller bearing type NU is used for the floating bearing whilst a ball bearing is used for the locating bearing.

A sliding disc provides sufficient oil to each bearing position.

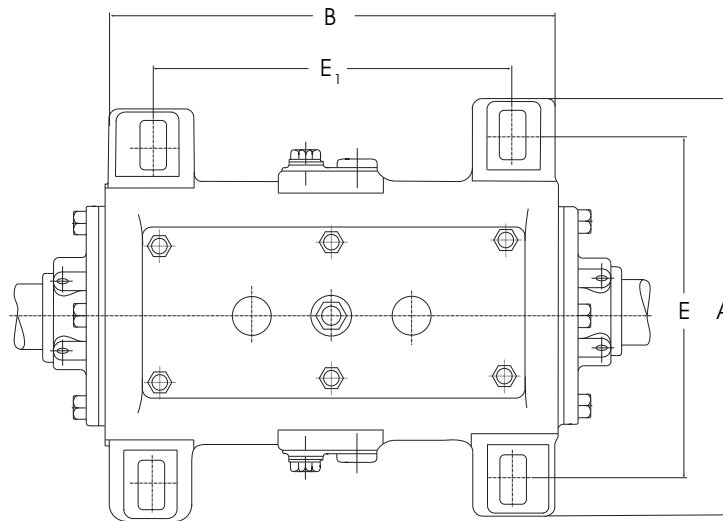
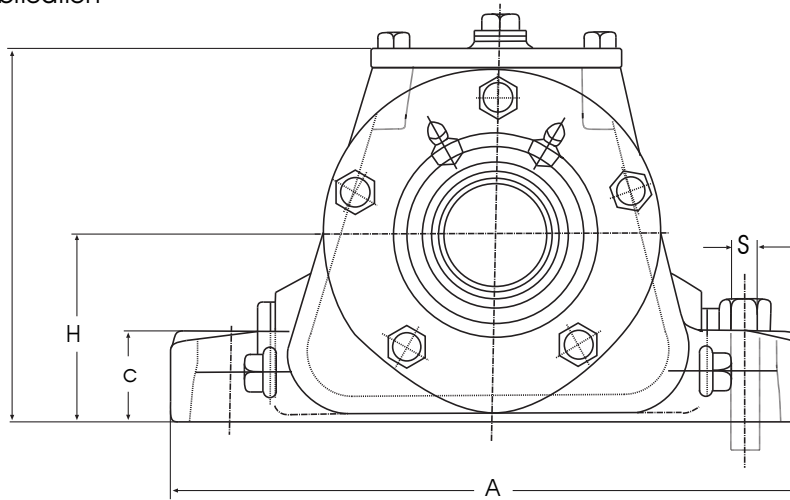
Various holes are incorporated in the housing through which it is possible, for instance, to fill oil or when required, for example at inspection or oil change, to drain off oil. The prescribed oil level can be controlled by means of an oil level gauge fitted for this purpose.

The incorporated splash rings and side covers are so arranged that under normal operating conditions it is not possible for oil to leak out.

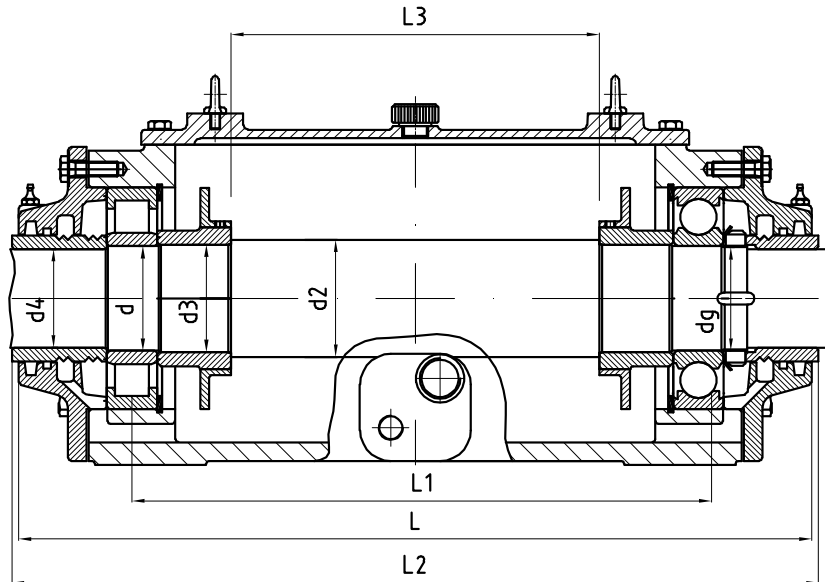
Regreasing chambers in the housing covers prevent the ingress of dirt.

Housed Bearing Unit

Series ZLGO
for oil lubrication



Housing	Dimensions in mm																
Ref No	d	d ₂	d ₃	d ₄	d _g	A	B	C	L ₁	H	H ₁	L	E	E ₁	L ₂	L ₃	s
ZLGO 40 A	40	50	42	37	M40 x 1,5	290	295	40	250	80	165	380	230	235	410	135	M16
ZLGO 45 A	45	55	47	40	M45 x 1,5	290	295	40	250	80	165	380	230	235	410	135	M16
ZLGO 50 A	50	60	52	45	M50 x 1,5	320	348	45	300	95	192	432	260	285	444	175	M16
ZLGO 55 A	55	65	57	50	M55 x 2	320	348	45	300	95	192	432	260	285	444	175	M16
ZLGO 60 A	60	70	62	55	M60 x 2	370	390	50	340	110	222	480	300	320	490	205	M20
ZLGO 65 A	65	75	67	60	M65 x 2	370	390	50	340	110	222	480	300	320	490	205	M20
ZLGO 70 A	70	80	72	65	M70 x 2	400	450	55	400	120	245	556	330	370	573	265	M20
ZLGO 75 A	75	85	77	70	M75 x 2	400	450	55	400	120	245	556	330	370	573	265	M20
ZLGO 80 A	80	90	82	75	M80 x 2	460	520	60	460	135	272	645	380	430	655	301	M24
ZLGO 85 A	85	95	87	70	M85 x 2	460	520	60	460	135	272	645	380	430	655	299	M24
ZLGO 90 A	90	105	92	85	M90 x 2	560	585	70	520	150	307	736	445	490	756	357	M36
ZLGO 95 A	95	110	97	90	M95 x 2	560	585	70	520	150	307	736	445	490	746	357	M36
ZLGO 100 A	100	115	102	95	M100 x 2	560	585	70	520	150	307	736	445	490	766	268	M36
ZLGO 110 A	110	125	112	105	M110 x 2	560	585	70	520	150	307	736	445	490	746	364	M36
ZLGO 120 A	120	140	122	115	M120 x 2	600	955	75	900	160	330	1105	480	860	1125	730	M36
ZLGO 130 A	130	150	132	125	M130 x 2	690	830	90	750	200	397	1024	550	710	1050	554	M42
ZLGO 140 A	140	160	142	135	M140 x 2	690	830	90	750	200	397	1024	550	710	1050	554	M24



Housing Ref No	Bearing		Nut	Safety Washer	Weight kg	Oil Qty l
	Floating	Locating				
ZLGO 40 A	NU 308 C3	6308 C3	KM 8	MB 8	23	0,9
ZLGO 45 A	NU 309 C3	6309 C3	KM 9	MB 9	24	0,9
ZLGO 50 A	NU 310 C3	6310 C3	KM 10	MB 10	27	1,5
ZLGO 55 A	NU 311 C3	6311 C3	KM 11	MB 11	30	1,5
ZLGO 60 A	NU 312 C3	6312 C3	KM 12	MB 12	55	2,2
ZLGO 65 A	NU 313 C3	6313 C3	KM 13	MB 13	56	2,2
ZLGO 70 A	NU 314 C3	6314 C3	KM 14	MB 14	72	3,0
ZLGO 75 A	NU 315 C3	6315 C3	KM 15	MB 15	70	3,0
ZLGO 80 A	NU 316 C3	6316 C3	KM 16	MB 16	105	4,0
ZLGO 85 A	NU 317 C3	6317 C3	KM 17	MB 17	120	4,0
ZLGO 90 A	NU 318 C3	6318 C3	KM 18	MB 18	140	6,0
ZLGO 95 A	NU 319 C3	6319 C3	KM 19	MB 19	145	6,0
ZLGO 100 A	NU 220 C3	6220 C3	KM 20	MB 20	145	6,0
ZLGO 110 A	NU 222 C3	6222 C3	KM 22	MB 22	150	6,0
ZLGO 120 A	NU 224 C3	6224 C3	KM 24	MB 24	220	10,0
ZLGO 130 A	NU 226 C3	6226 C3	KM 26	MB 26	340	18,0
ZLGO 140 A	NU 228 C3	6228 C3	KM 28	MB 28	350	20,0